

ADDENDUM*

TULSA METROPOLITAN AREA PLANNING COMMISSION

For Meeting No. 2475

March 28, 2007

1:30 PM

Francis Campbell City Council Room
Plaza Level, Tulsa Civic Center

CONSIDER, DISCUSS AND/OR TAKE ACTION ON

Call to Order:

REPORTS

Chairman's Report:

Worksession Report:

Comprehensive Plan Report:

Report on the update of the Comprehensive Plan

Director's Report:

1. Minutes of March 7, 2007, Meeting No. 2473

2. **CONSENT AGENDA**

All matters under "Consent" are considered by the Planning Commission to be routine and will be enacted by one motion. Any Planning Commission member may, however, remove an item by request.

- a. **Home Center Amended – Final Plat** (8406) (PD 18) (CD 8)
6611 South 101st East Avenue
- b. **Change of Access-** (9425) (PD 17) (CD 6)
Lot 1, Block 1, Stone Creek Commercial Center
- c. **CONSIDERATION OF ITEMS REMOVED FROM THE CONSENT AGENDA**

- 2A. **COMPREHENSIVE PLAN PUBLIC HEARING**

1. ***Consider amending Comprehensive Plan for the Tulsa Metropolitan Area, by adopting the Manmade Hazard Mitigation Plan for the City of Tulsa – Non Secure Report and Resolution 2471:881.**

3. **PUBLIC HEARINGS**

- a. **Z-7052/PUD-738 – Charles E. Norman** AG to RS-3/RM-0/CS/PUD
Southwest corner West 71st Street and South Elwood Avenue (PUD proposes mixed use development.) (Continued from March 21, 2007) (PD-8) (CD-2)
- b. **PUD-274-5 – Lou Reynolds** (PD-18) (CD-9)
5727 South Lewis Avenue (Minor Amendment for an increase in permitted wall signage to allow an additional wall sign.)

c. **PUD-221-F-2 – JLB Construction, Inc.**

(PD-17) (CD-6)

4409 South 135th East Avenue (Minor Amendment to reduce the rear setback from 20 feet to 15 feet for the construction of a residence.)

4. **OTHER BUSINESS**

a. **Commissioners' Comments**

ADJOURN

PD = Planning District/CD = Council District

NOTICE: If you require special accommodation pursuant to the Americans with Disabilities Act, please notify INCOG (918) 584-7526

Exhibits, Petitions, Pictures, etc., presented to the Planning Commission may be received and deposited in case files to be maintained at Land Development Services, INCOG.

Ringling/sound on all cell phones and pagers must be turned off during the Planning Commission.

Visit our website @ www.tmapc.org

The mission of the Tulsa Metropolitan Area Planning Commission (TMAPC) is to provide comprehensive planning, zoning and land division services for the City of Tulsa and Tulsa County through a joint city-county cooperative planning commission resulting in the orderly development of the Tulsa Metropolitan Area and enhancing and preserving the quality of life for the region's current and future residents.

TMAPC Mission Statement

A G E N D A

TULSA METROPOLITAN AREA PLANNING COMMISSION

WORKSESSION

**Francis Campbell City Council Room
Plaza Level**

Wednesday, March 28, 2007– 1:45 p.m.*

(*Or immediately following adjournment of the TMAPC Meeting)

CONSIDER, DISCUSS AND/OR TAKE ACTION ON:

1. Briefing on East Tulsa Plan, Phase 2 (Carr)
2. Briefing on the Sequoyah Neighborhood Plan (Carr)

Adjourn. www.tmapc.org

If you require special accommodation pursuant to the Americans with Disabilities Act, please notify INCOG (918) 584-7526

A G E N D A

TULSA METROPOLITAN AREA PLANNING COMMISSION

TRAINING SESSION

INCOG

**201 West 5th, Suite 550
5th Floor Conference Room**

**Wednesday, March 28, 2007
11:00 a.m.**

CONSIDER, DISCUSS AND/OR TAKE ACTION ON:

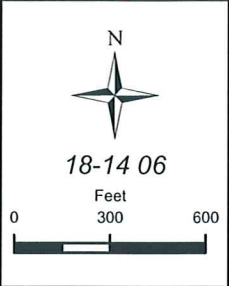
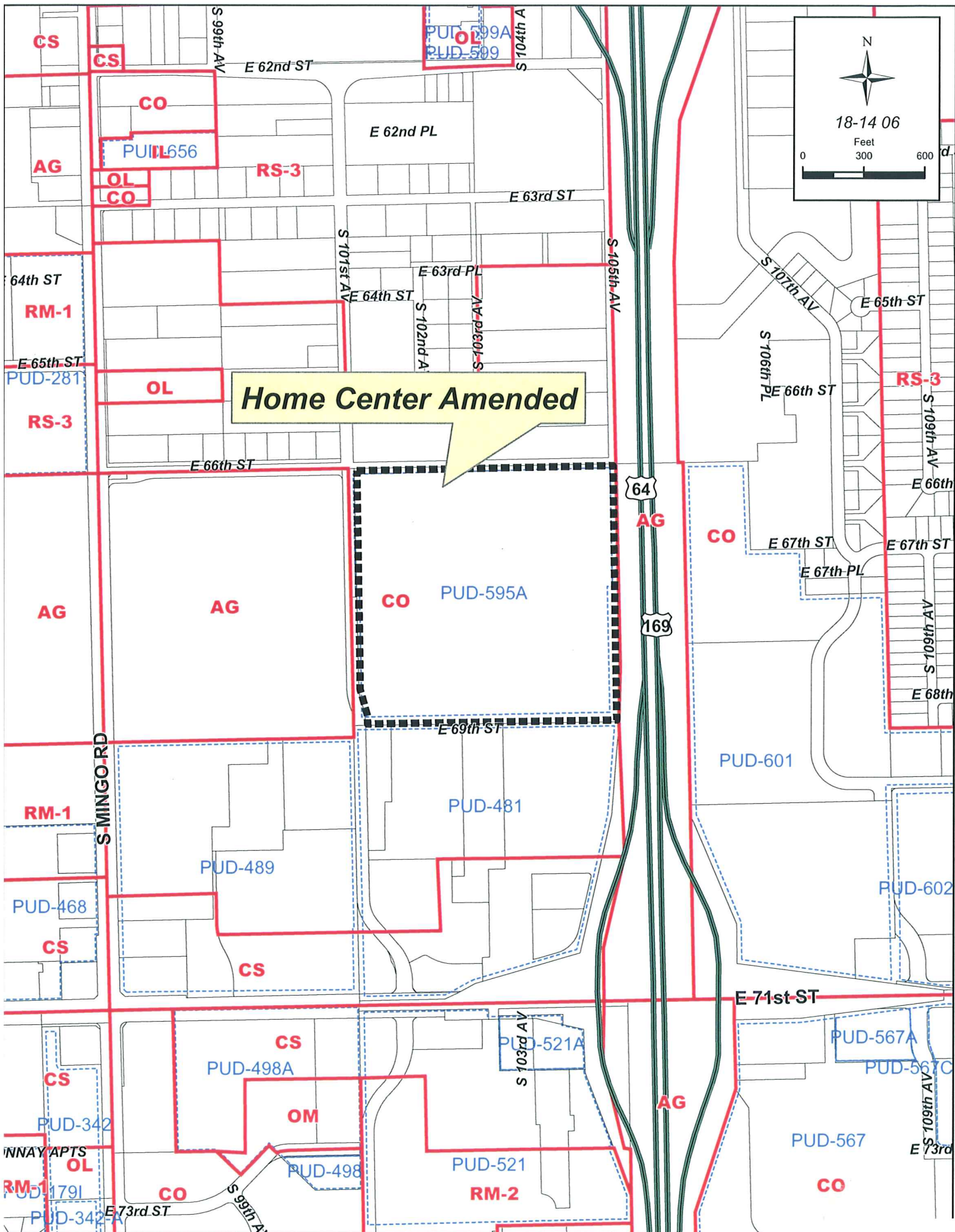
1. Introduction to Land Development Services Staff (Staff)
2. Review and discuss Policies and Procedures and Code of Ethics (Staff)
3. Review Planning Commissioner Committee Assignments

Adjourn.

Visit our website at www.tmapc.org

The mission of the Tulsa Metropolitan Area Planning Commission (TMAPC) is to provide comprehensive planning, zoning and land division services for the City of Tulsa and Tulsa County through a joint city-county cooperative planning commission resulting in the orderly development of the Tulsa Metropolitan Area and enhancing and preserving the quality of life for the region's current and future residents.

TMAPC Mission Statement



Home Center Amended

CO PUD-595A

64

169

S MINGO RD

CS
 CO
 AG
 OL
 CO
 RS-3
 E 62nd ST
 E 62nd PL
 E 63rd ST
 E 63rd PL
 E 64th ST
 E 64th ST
 E 65th ST
 E 65th ST
 E 66th ST
 E 66th ST
 E 67th ST
 E 67th ST
 E 67th PL
 E 69th ST
 E 71st ST
 E 73rd ST
 S 99th AV
 S 101st AV
 S 102nd AV
 S 103rd AV
 S 104th AV
 S 105th AV
 S 106th AV
 S 107th AV
 S 109th AV
 S 110th AV
 PUD-599A
 PUD-509
 PUD-656
 PUD-281
 PUD-481
 PUD-489
 PUD-468
 PUD-342
 PUD-498A
 PUD-498
 PUD-521
 PUD-521A
 PUD-567A
 PUD-567C
 PUD-567
 PUD-601
 PUD-602
 PUD-603
 PUD-604
 PUD-605
 PUD-606
 PUD-607
 PUD-608
 PUD-609
 PUD-610
 PUD-611
 PUD-612
 PUD-613
 PUD-614
 PUD-615
 PUD-616
 PUD-617
 PUD-618
 PUD-619
 PUD-620
 PUD-621
 PUD-622
 PUD-623
 PUD-624
 PUD-625
 PUD-626
 PUD-627
 PUD-628
 PUD-629
 PUD-630
 PUD-631
 PUD-632
 PUD-633
 PUD-634
 PUD-635
 PUD-636
 PUD-637
 PUD-638
 PUD-639
 PUD-640
 PUD-641
 PUD-642
 PUD-643
 PUD-644
 PUD-645
 PUD-646
 PUD-647
 PUD-648
 PUD-649
 PUD-650
 PUD-651
 PUD-652
 PUD-653
 PUD-654
 PUD-655
 PUD-656
 PUD-657
 PUD-658
 PUD-659
 PUD-660
 PUD-661
 PUD-662
 PUD-663
 PUD-664
 PUD-665
 PUD-666
 PUD-667
 PUD-668
 PUD-669
 PUD-670
 PUD-671
 PUD-672
 PUD-673
 PUD-674
 PUD-675
 PUD-676
 PUD-677
 PUD-678
 PUD-679
 PUD-680
 PUD-681
 PUD-682
 PUD-683
 PUD-684
 PUD-685
 PUD-686
 PUD-687
 PUD-688
 PUD-689
 PUD-690
 PUD-691
 PUD-692
 PUD-693
 PUD-694
 PUD-695
 PUD-696
 PUD-697
 PUD-698
 PUD-699
 PUD-700
 PUD-701
 PUD-702
 PUD-703
 PUD-704
 PUD-705
 PUD-706
 PUD-707
 PUD-708
 PUD-709
 PUD-710
 PUD-711
 PUD-712
 PUD-713
 PUD-714
 PUD-715
 PUD-716
 PUD-717
 PUD-718
 PUD-719
 PUD-720
 PUD-721
 PUD-722
 PUD-723
 PUD-724
 PUD-725
 PUD-726
 PUD-727
 PUD-728
 PUD-729
 PUD-730
 PUD-731
 PUD-732
 PUD-733
 PUD-734
 PUD-735
 PUD-736
 PUD-737
 PUD-738
 PUD-739
 PUD-740
 PUD-741
 PUD-742
 PUD-743
 PUD-744
 PUD-745
 PUD-746
 PUD-747
 PUD-748
 PUD-749
 PUD-750
 PUD-751
 PUD-752
 PUD-753
 PUD-754
 PUD-755
 PUD-756
 PUD-757
 PUD-758
 PUD-759
 PUD-760
 PUD-761
 PUD-762
 PUD-763
 PUD-764
 PUD-765
 PUD-766
 PUD-767
 PUD-768
 PUD-769
 PUD-770
 PUD-771
 PUD-772
 PUD-773
 PUD-774
 PUD-775
 PUD-776
 PUD-777
 PUD-778
 PUD-779
 PUD-780
 PUD-781
 PUD-782
 PUD-783
 PUD-784
 PUD-785
 PUD-786
 PUD-787
 PUD-788
 PUD-789
 PUD-790
 PUD-791
 PUD-792
 PUD-793
 PUD-794
 PUD-795
 PUD-796
 PUD-797
 PUD-798
 PUD-799
 PUD-800
 PUD-801
 PUD-802
 PUD-803
 PUD-804
 PUD-805
 PUD-806
 PUD-807
 PUD-808
 PUD-809
 PUD-810
 PUD-811
 PUD-812
 PUD-813
 PUD-814
 PUD-815
 PUD-816
 PUD-817
 PUD-818
 PUD-819
 PUD-820
 PUD-821
 PUD-822
 PUD-823
 PUD-824
 PUD-825
 PUD-826
 PUD-827
 PUD-828
 PUD-829
 PUD-830
 PUD-831
 PUD-832
 PUD-833
 PUD-834
 PUD-835
 PUD-836
 PUD-837
 PUD-838
 PUD-839
 PUD-840
 PUD-841
 PUD-842
 PUD-843
 PUD-844
 PUD-845
 PUD-846
 PUD-847
 PUD-848
 PUD-849
 PUD-850
 PUD-851
 PUD-852
 PUD-853
 PUD-854
 PUD-855
 PUD-856
 PUD-857
 PUD-858
 PUD-859
 PUD-860
 PUD-861
 PUD-862
 PUD-863
 PUD-864
 PUD-865
 PUD-866
 PUD-867
 PUD-868
 PUD-869
 PUD-870
 PUD-871
 PUD-872
 PUD-873
 PUD-874
 PUD-875
 PUD-876
 PUD-877
 PUD-878
 PUD-879
 PUD-880
 PUD-881
 PUD-882
 PUD-883
 PUD-884
 PUD-885
 PUD-886
 PUD-887
 PUD-888
 PUD-889
 PUD-890
 PUD-891
 PUD-892
 PUD-893
 PUD-894
 PUD-895
 PUD-896
 PUD-897
 PUD-898
 PUD-899
 PUD-900
 PUD-901
 PUD-902
 PUD-903
 PUD-904
 PUD-905
 PUD-906
 PUD-907
 PUD-908
 PUD-909
 PUD-910
 PUD-911
 PUD-912
 PUD-913
 PUD-914
 PUD-915
 PUD-916
 PUD-917
 PUD-918
 PUD-919
 PUD-920
 PUD-921
 PUD-922
 PUD-923
 PUD-924
 PUD-925
 PUD-926
 PUD-927
 PUD-928
 PUD-929
 PUD-930
 PUD-931
 PUD-932
 PUD-933
 PUD-934
 PUD-935
 PUD-936
 PUD-937
 PUD-938
 PUD-939
 PUD-940
 PUD-941
 PUD-942
 PUD-943
 PUD-944
 PUD-945
 PUD-946
 PUD-947
 PUD-948
 PUD-949
 PUD-950
 PUD-951
 PUD-952
 PUD-953
 PUD-954
 PUD-955
 PUD-956
 PUD-957
 PUD-958
 PUD-959
 PUD-960
 PUD-961
 PUD-962
 PUD-963
 PUD-964
 PUD-965
 PUD-966
 PUD-967
 PUD-968
 PUD-969
 PUD-970
 PUD-971
 PUD-972
 PUD-973
 PUD-974
 PUD-975
 PUD-976
 PUD-977
 PUD-978
 PUD-979
 PUD-980
 PUD-981
 PUD-982
 PUD-983
 PUD-984
 PUD-985
 PUD-986
 PUD-987
 PUD-988
 PUD-989
 PUD-990
 PUD-991
 PUD-992
 PUD-993
 PUD-994
 PUD-995
 PUD-996
 PUD-997
 PUD-998
 PUD-999
 PUD-1000



N



**Home Center
Amended**

18-14 06

Feet
0 300 600



Final Subdivision Plat

Home Center Amended - (8406) (PD 18) (CD 8)
6611 South 101st East Avenue

This plat consists of 10 Lots in 1 Block on 37 acres.

Staff recommends **APPROVAL** of the Final Plat. All release letters have been received.

Home Center Amended

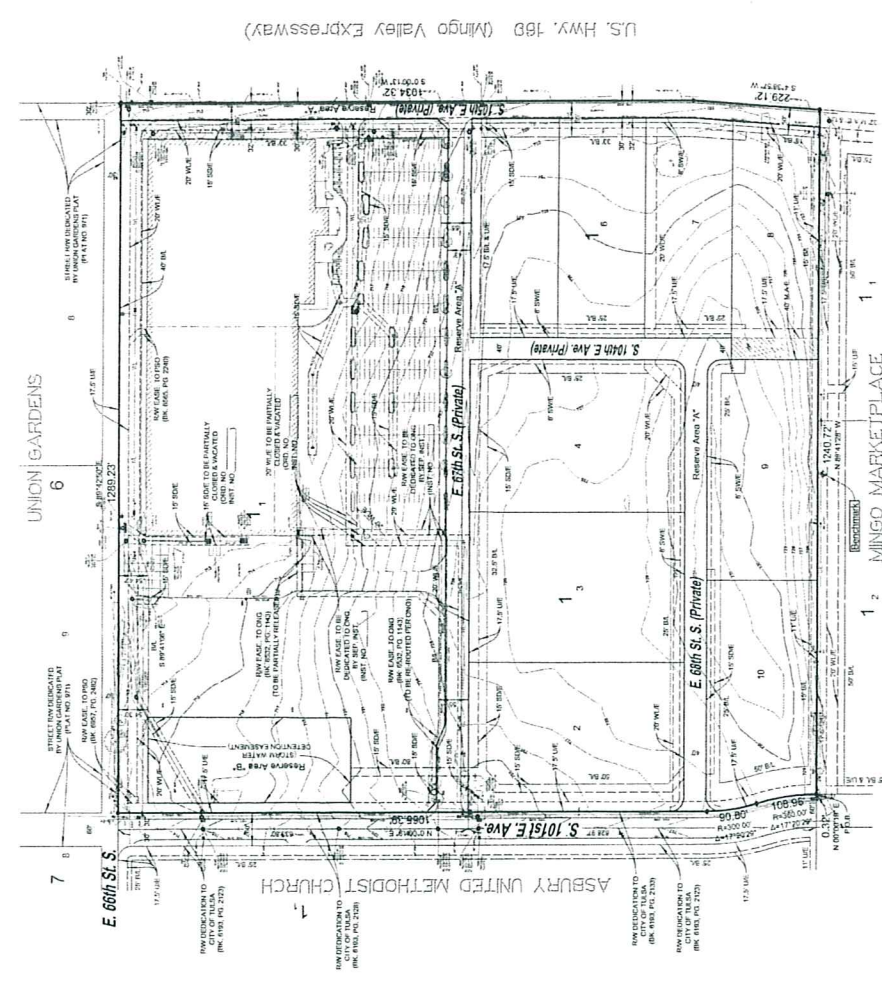
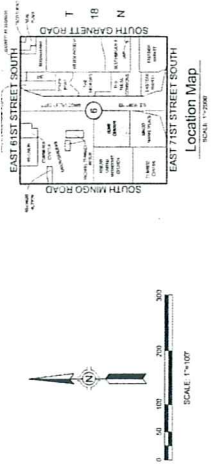
A RESUBDIVISION OF ALL OF LOT ONE (1), HOME CENTER, A SUBDIVISION OF PART OF THE NORTHWEST QUARTER (NEA) OF THE SOUTHWEST QUARTER (SWA) OF SECTION 16, TOWNSHIP 18 NORTH, RANGE 14 EAST, CITY OF TULSA, TULSA COUNTY, OKLAHOMA.

P.U.D. NO. 595-B/Corridor District Site Plan No. Z-5970-SP-5

Owner:
DLB Investments, LLC
An Oklahoma Limited Liability Company
City of Tulsa, Oklahoma
Oklahoma City, Oklahoma 73123
Phone: (405) 951-1233
Contact: Mr. Calvin Worth

Engineer/Surveyor:
Sisemore Weisz & Associates, Inc.
Certificate of Administration No. 2471 Exp. June 30, 2007
Tulsa, Oklahoma 74135
Phone: (918) 665-3600
E-mail: pweisz@sw-assoc.com

PLAT NO.



FINAL PLAT
CERTIFICATE OF APPROVAL
I hereby certify that the plat has been approved by the Planning Commission.
This approval is void if not
approved by the City of Tulsa.
APPROVED: _____
City of Tulsa, Oklahoma
Mayor: _____
Approved: _____
Approved: _____

STATE OF OKLAHOMA } SS
COUNTY OF TULSA }
I, _____, County Clerk of Tulsa County, Oklahoma, do hereby certify that the foregoing is a true and correct copy of the instrument filed for record in the County Clerk's Office on this day of _____, 2007.
Filed for _____
Tulsa County, Oklahoma, Tulsa County Clerk

LOT	BLK	LOT SIZE (SQUARE FEET)
1	1	400,000.00
2	1	100,000.00
3	1	100,000.00
4	1	100,000.00
5	1	100,000.00
6	1	100,000.00
7	1	100,000.00
8	1	100,000.00
9	1	100,000.00
10	1	100,000.00

Subdivision Statistics:
APPROXIMATE GROSS AREA: 1,000,000 SQ. FT. (22.09 AC.)
APPROXIMATE NET AREA: 800,000 SQ. FT. (18.31 AC.)
APPROXIMATE TOTAL LOT AREA: 1,000,000 SQ. FT. (22.09 AC.)
APPROXIMATE TOTAL LOT AREA: 1,000,000 SQ. FT. (22.09 AC.)

Legend:
 1. UTILITY EASEMENT
 2. EASEMENT TO TRUCK DR.
 3. EASEMENT TO SIDEWALK
 4. EASEMENT TO SANITARY SEWER EASTMENT
 5. EASEMENT TO SANITARY SEWER WESTMENT
 6. EASEMENT TO SANITARY SEWER NORTH
 7. EASEMENT TO SANITARY SEWER SOUTH
 8. EASEMENT TO SANITARY SEWER WEST
 9. EASEMENT TO SANITARY SEWER EAST
 10. EASEMENT TO SANITARY SEWER NORTH
 11. EASEMENT TO SANITARY SEWER SOUTH
 12. EASEMENT TO SANITARY SEWER WEST
 13. EASEMENT TO SANITARY SEWER EAST
 14. EASEMENT TO SANITARY SEWER NORTH
 15. EASEMENT TO SANITARY SEWER SOUTH
 16. EASEMENT TO SANITARY SEWER WEST
 17. EASEMENT TO SANITARY SEWER EAST
 18. EASEMENT TO SANITARY SEWER NORTH
 19. EASEMENT TO SANITARY SEWER SOUTH
 20. EASEMENT TO SANITARY SEWER WEST
 21. EASEMENT TO SANITARY SEWER EAST
 22. EASEMENT TO SANITARY SEWER NORTH
 23. EASEMENT TO SANITARY SEWER SOUTH
 24. EASEMENT TO SANITARY SEWER WEST
 25. EASEMENT TO SANITARY SEWER EAST
 26. EASEMENT TO SANITARY SEWER NORTH
 27. EASEMENT TO SANITARY SEWER SOUTH
 28. EASEMENT TO SANITARY SEWER WEST
 29. EASEMENT TO SANITARY SEWER EAST
 30. EASEMENT TO SANITARY SEWER NORTH
 31. EASEMENT TO SANITARY SEWER SOUTH
 32. EASEMENT TO SANITARY SEWER WEST
 33. EASEMENT TO SANITARY SEWER EAST
 34. EASEMENT TO SANITARY SEWER NORTH
 35. EASEMENT TO SANITARY SEWER SOUTH
 36. EASEMENT TO SANITARY SEWER WEST
 37. EASEMENT TO SANITARY SEWER EAST
 38. EASEMENT TO SANITARY SEWER NORTH
 39. EASEMENT TO SANITARY SEWER SOUTH
 40. EASEMENT TO SANITARY SEWER WEST
 41. EASEMENT TO SANITARY SEWER EAST
 42. EASEMENT TO SANITARY SEWER NORTH
 43. EASEMENT TO SANITARY SEWER SOUTH
 44. EASEMENT TO SANITARY SEWER WEST
 45. EASEMENT TO SANITARY SEWER EAST
 46. EASEMENT TO SANITARY SEWER NORTH
 47. EASEMENT TO SANITARY SEWER SOUTH
 48. EASEMENT TO SANITARY SEWER WEST
 49. EASEMENT TO SANITARY SEWER EAST
 50. EASEMENT TO SANITARY SEWER NORTH
 51. EASEMENT TO SANITARY SEWER SOUTH
 52. EASEMENT TO SANITARY SEWER WEST
 53. EASEMENT TO SANITARY SEWER EAST
 54. EASEMENT TO SANITARY SEWER NORTH
 55. EASEMENT TO SANITARY SEWER SOUTH
 56. EASEMENT TO SANITARY SEWER WEST
 57. EASEMENT TO SANITARY SEWER EAST
 58. EASEMENT TO SANITARY SEWER NORTH
 59. EASEMENT TO SANITARY SEWER SOUTH
 60. EASEMENT TO SANITARY SEWER WEST
 61. EASEMENT TO SANITARY SEWER EAST
 62. EASEMENT TO SANITARY SEWER NORTH
 63. EASEMENT TO SANITARY SEWER SOUTH
 64. EASEMENT TO SANITARY SEWER WEST
 65. EASEMENT TO SANITARY SEWER EAST
 66. EASEMENT TO SANITARY SEWER NORTH
 67. EASEMENT TO SANITARY SEWER SOUTH
 68. EASEMENT TO SANITARY SEWER WEST
 69. EASEMENT TO SANITARY SEWER EAST
 70. EASEMENT TO SANITARY SEWER NORTH
 71. EASEMENT TO SANITARY SEWER SOUTH
 72. EASEMENT TO SANITARY SEWER WEST
 73. EASEMENT TO SANITARY SEWER EAST
 74. EASEMENT TO SANITARY SEWER NORTH
 75. EASEMENT TO SANITARY SEWER SOUTH
 76. EASEMENT TO SANITARY SEWER WEST
 77. EASEMENT TO SANITARY SEWER EAST
 78. EASEMENT TO SANITARY SEWER NORTH
 79. EASEMENT TO SANITARY SEWER SOUTH
 80. EASEMENT TO SANITARY SEWER WEST
 81. EASEMENT TO SANITARY SEWER EAST
 82. EASEMENT TO SANITARY SEWER NORTH
 83. EASEMENT TO SANITARY SEWER SOUTH
 84. EASEMENT TO SANITARY SEWER WEST
 85. EASEMENT TO SANITARY SEWER EAST
 86. EASEMENT TO SANITARY SEWER NORTH
 87. EASEMENT TO SANITARY SEWER SOUTH
 88. EASEMENT TO SANITARY SEWER WEST
 89. EASEMENT TO SANITARY SEWER EAST
 90. EASEMENT TO SANITARY SEWER NORTH
 91. EASEMENT TO SANITARY SEWER SOUTH
 92. EASEMENT TO SANITARY SEWER WEST
 93. EASEMENT TO SANITARY SEWER EAST
 94. EASEMENT TO SANITARY SEWER NORTH
 95. EASEMENT TO SANITARY SEWER SOUTH
 96. EASEMENT TO SANITARY SEWER WEST
 97. EASEMENT TO SANITARY SEWER EAST
 98. EASEMENT TO SANITARY SEWER NORTH
 99. EASEMENT TO SANITARY SEWER SOUTH
 100. EASEMENT TO SANITARY SEWER WEST

Notes:
1. THE BEARING DATA FOR THIS PLAT IS BASED ON THE BENCHMARK OF THE NE CORNER OF LOT 1, BLOCK 1, SECTION 16, TOWNSHIP 18 NORTH, RANGE 14 EAST, CITY OF TULSA, TULSA COUNTY, OKLAHOMA.
2. THE BEARING DATA FOR THIS PLAT IS BASED ON THE BENCHMARK OF THE NE CORNER OF LOT 1, BLOCK 1, SECTION 16, TOWNSHIP 18 NORTH, RANGE 14 EAST, CITY OF TULSA, TULSA COUNTY, OKLAHOMA.
3. THE BEARING DATA FOR THIS PLAT IS BASED ON THE BENCHMARK OF THE NE CORNER OF LOT 1, BLOCK 1, SECTION 16, TOWNSHIP 18 NORTH, RANGE 14 EAST, CITY OF TULSA, TULSA COUNTY, OKLAHOMA.
4. THE BEARING DATA FOR THIS PLAT IS BASED ON THE BENCHMARK OF THE NE CORNER OF LOT 1, BLOCK 1, SECTION 16, TOWNSHIP 18 NORTH, RANGE 14 EAST, CITY OF TULSA, TULSA COUNTY, OKLAHOMA.
5. THE BEARING DATA FOR THIS PLAT IS BASED ON THE BENCHMARK OF THE NE CORNER OF LOT 1, BLOCK 1, SECTION 16, TOWNSHIP 18 NORTH, RANGE 14 EAST, CITY OF TULSA, TULSA COUNTY, OKLAHOMA.
6. THE BEARING DATA FOR THIS PLAT IS BASED ON THE BENCHMARK OF THE NE CORNER OF LOT 1, BLOCK 1, SECTION 16, TOWNSHIP 18 NORTH, RANGE 14 EAST, CITY OF TULSA, TULSA COUNTY, OKLAHOMA.
7. THE BEARING DATA FOR THIS PLAT IS BASED ON THE BENCHMARK OF THE NE CORNER OF LOT 1, BLOCK 1, SECTION 16, TOWNSHIP 18 NORTH, RANGE 14 EAST, CITY OF TULSA, TULSA COUNTY, OKLAHOMA.
8. THE BEARING DATA FOR THIS PLAT IS BASED ON THE BENCHMARK OF THE NE CORNER OF LOT 1, BLOCK 1, SECTION 16, TOWNSHIP 18 NORTH, RANGE 14 EAST, CITY OF TULSA, TULSA COUNTY, OKLAHOMA.
9. THE BEARING DATA FOR THIS PLAT IS BASED ON THE BENCHMARK OF THE NE CORNER OF LOT 1, BLOCK 1, SECTION 16, TOWNSHIP 18 NORTH, RANGE 14 EAST, CITY OF TULSA, TULSA COUNTY, OKLAHOMA.
10. THE BEARING DATA FOR THIS PLAT IS BASED ON THE BENCHMARK OF THE NE CORNER OF LOT 1, BLOCK 1, SECTION 16, TOWNSHIP 18 NORTH, RANGE 14 EAST, CITY OF TULSA, TULSA COUNTY, OKLAHOMA.

NOTE: THIS PLAT IS VALID FOR ALL INTERESTS THEREIN.

RECEIVED
DEC 3 1 1906
TULSA COUNTY
PLANNING COMMISSION

Home Center Amended
Sheet 1 of 1
Date Plotted: November 29, 2006

Change of Access on Recorded Plat TMAPC March 28, 2007

Lot 1, Block 1, Stone Creek Commercial Center – (9425) (PD 17) (CD 6)
Northwest corner of East 51st Street South and South 193rd East Avenue

This application is made to allow a change of access along East 51st Street South. The property is zoned under PUD 712.

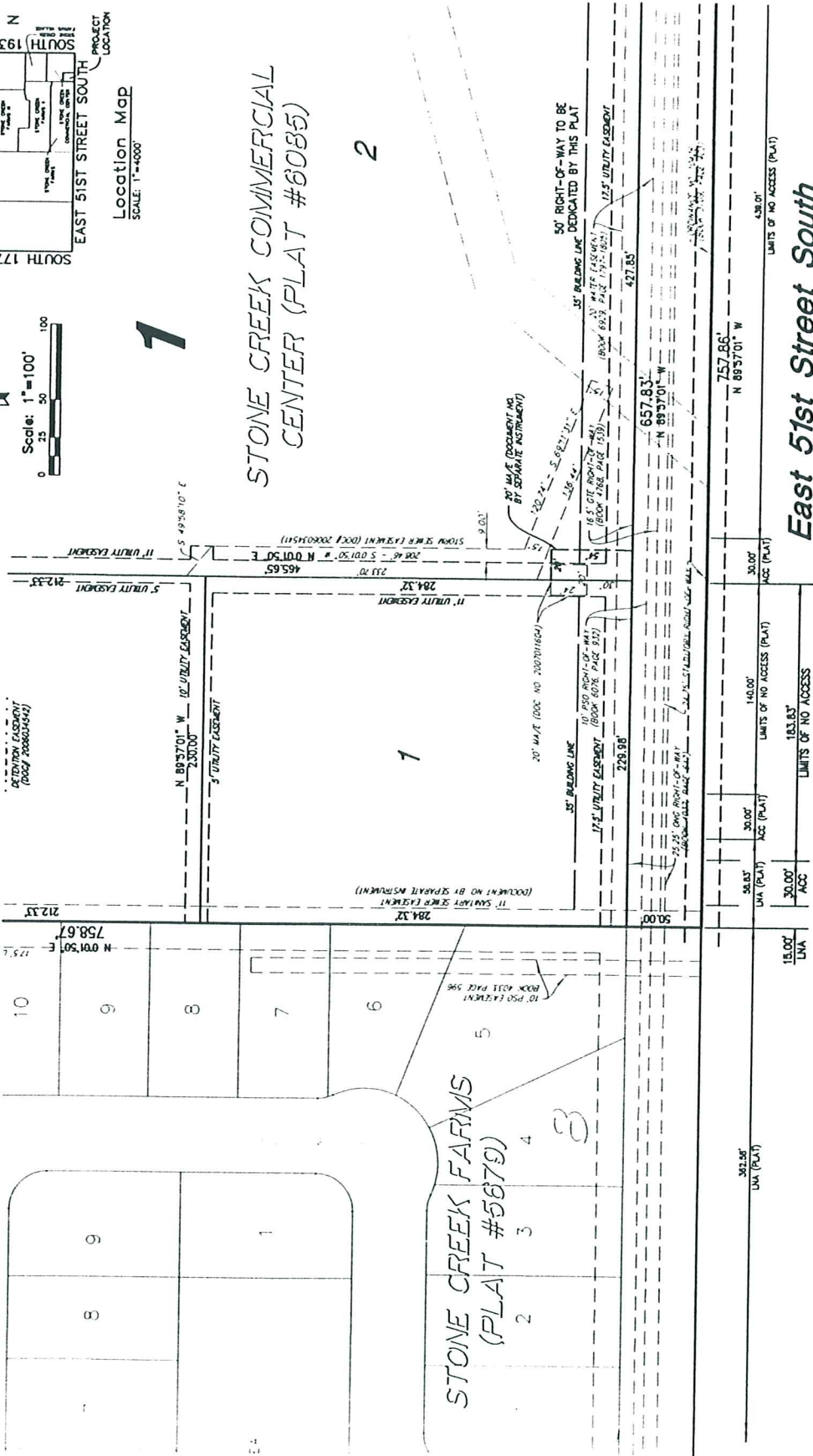
Staff recommends approval of the change of access. The Traffic Engineer has reviewed and approved the request. Staff recommends **APPROVAL** of the change of access as submitted.

EXHIBIT A

'NEW ACCESS POINT'



Location Map
SCALE: 1"=4000'



STONE CREEK COMMERCIAL CENTER (PLAT #6085)

STONE CREEK FARMS (PLAT #5679)

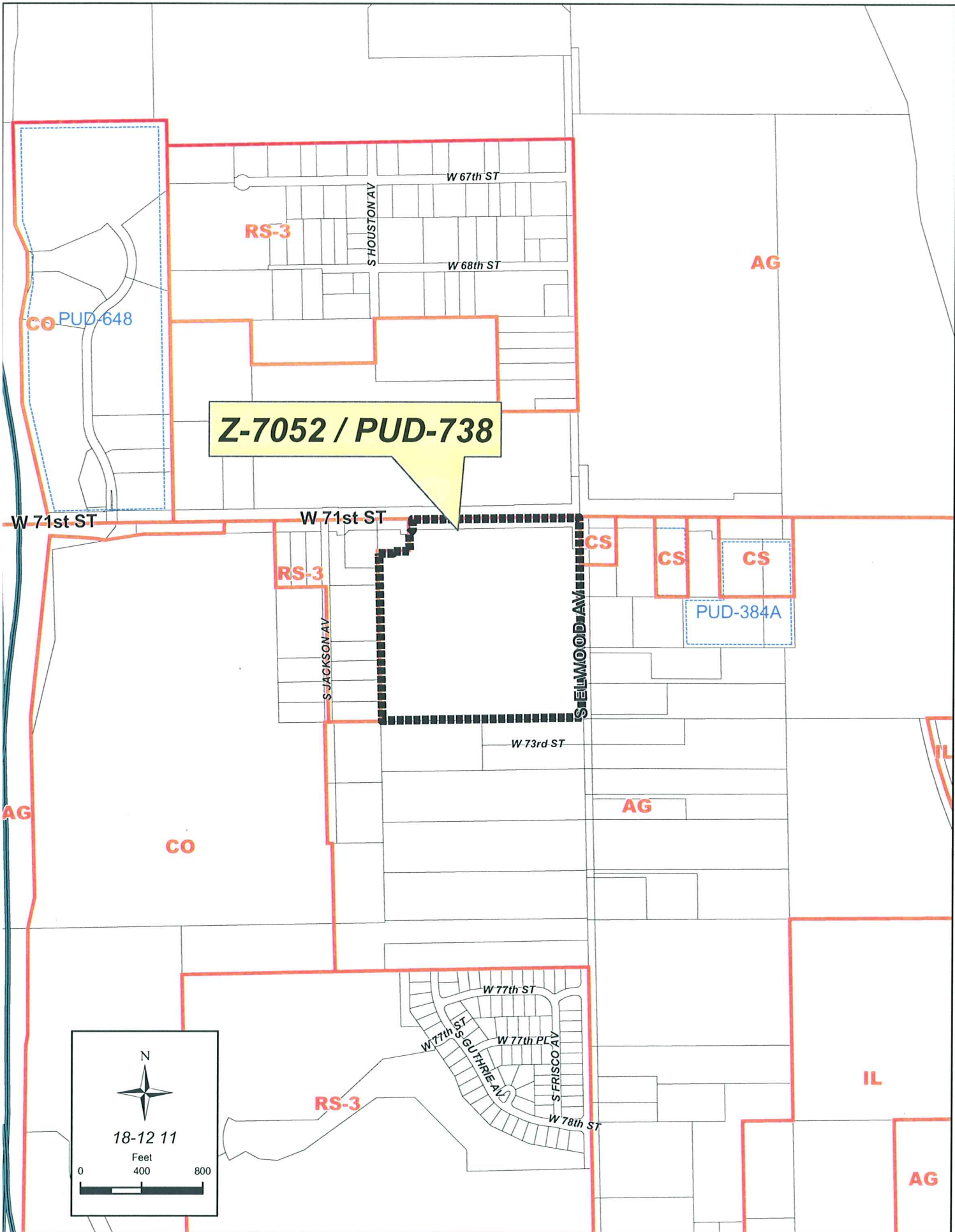
East 51st Street South

amended westernmost access

HRA

HRAOK, INC.

1913 WEST TACOMA - SUITE C VOICE: (913) 255-3737
BROKEN ARROW, OKLAHOMA 74012 FAX: (913) 255-2454
CA# 3643 EXP. DATE: 6-30-2007



Z-7052 / PUD-738

CO PUD-648

RS-3

AG

W 71st ST

W 71st ST

RS-3

S JACKSON AV

S SILWOOD AV

CS

CS

CS

PUD-384A

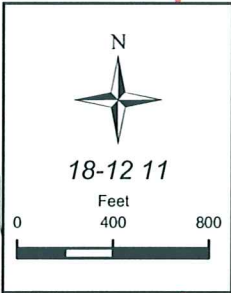
W 73rd ST

AG

CO

AG

IL



18-12 11

Feet

0

400

800

RS-3

W 77th ST
S GUTHRIE AV
W 77th PL
S FRISCO AV
W 78th ST

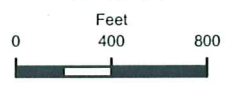
IL

AG



Z-7052 / PUD-738

18-12 11



**TULSA METROPOLITAN AREA PLANNING COMMISSION
CASE REPORT**

APPLICATION: Z-7052

TRS 8211

Atlas 0

CZM 51

PD-8 CD-2

TMAPC Hearing Date: March 28, 2007

(Continued from March 21, 2007)

Applicant: Charles E Norman

Tract Size: 39.19+ acres

ADDRESS/GENERAL LOCATION: Southwest corner West 71st Street and South Elwood Avenue

EXISTING ZONING: AG

EXISTING USE: Vacant

ZONING ORDINANCE: Ordinance number 11877 dated June 26, 1970, established zoning for the subject property.

PROPOSED ZONING: RS-3/RM-0/CS/PUD

PROPOSED USE: Multifamily, office, hotel, commercial

RELEVANT ZONING HISTORY:

Z-7008-SP-1/Z-6966-SP-1/Z-6967-SP-1 March 2006: All concurred in approval of a Corridor Site Plan on 176+ acres to permit a regional shopping center known as the Tulsa Hills site with a total of 1,554,194 square feet of maximum building floor area approved at a .25 floor area ratio on property located east of U.S. Highway 75 between West 71st and West 81st Streets and west of subject property.

Z-7008 March 2006: All concurred in approval of a request to rezone a 43.6+ acre tract from AG/RS-3 to CO on property located East side of U. S. Highway 75 South between West 71st Street South and West 81st Street South for regional shopping center known as Tulsa Hills.

Z-6967 February 2005: Approval was granted on a request to rezone the sixty-two acre tract located on the northeast corner of West 81st Street South and U. S. Highway 75 South, from AG to CO.

Z-6966 February 2005: Approval was granted on a request to rezone a seventy-two acre tract located on the southeast corner of West 71st Street South and U. S. Highway 75 South from AG to CO. An accompanying recommendation was to amend the District Plan map to reflect the CO rezoning, which has been done.

Z-6871 November 2002: All concurred in approval of a request to rezone a 141-acre tract located on the northwest corner of West 81st Street and South Elwood Avenue and south of subject property, from AG to RS-3 for residential development.

Z-6858/PUD-660 July 2002: All concurred in approval of a request to rezone a 2.2+ acre tract from AG to CS/PUD and a Planned Unit Development for commercial uses on property located east of the southeast corner of South Elwood Avenue and West 71st Street.

Z-6001-SP-1/PUD-648 May 2001: A Planned Unit Development and Detail Corridor Site Plan were approved for hospital and office use on a 56-acre parcel located on the northeast corner of West 71st Street and U. S. High 75 South. The original CO zoning for this parcel had been approved in 1984 from AG to CO.

PUD-636/Z-5457-SP/Z-4825-SP October 2000: Approval was granted, subject to conditions of the PUD, for a Planned Unit Development on a 108-acre tract located on the northwest corner of West 81st Street South and South Highway 75 and west of the subject tract. The proposed uses include single-family and townhouse dwellings and commercial uses.

Z-6251 August 1989: All concurred in approval of a request to rezone three parcels containing one acre each and located south of the southwest corner of West 71st Street South and South Jackson Avenue, from RS-3 to AG.

PUD-384-A April 1987: The applicant requested a major amendment to PUD-384 to abandon previous uses that had originally been allowed and requested approval for Use Units 11, 14, 15 and 17. All concurred in approval of the request subject to conditions for the following uses, a mini-storage facility, a retail lawn and garden business with office and showroom. Use Unit 17 permitted the mini-storage facility only and all outdoor display for retail lawn and garden business would be only for seasonal merchandise. The property is located east of the southeast corner of South Elwood Avenue and West 71st Street.

Z-6017/PUD-384 May 1985: A request to develop a ten-acre tract located east of the southeast corner of South Elwood Avenue and West 71st Street for commercial use was approved with conditions for CS zoning on the north 550'. The requested IL zoning was denied.

AREA DESCRIPTION:

SITE ANALYSIS: The subject property is approximately 39.19 acres in size and is located southwest corner West 71st Street and South Elwood Avenue. The property appears to be vacant, semi-wooded and is zoned AG.

STREETS:

Exist. Access	MSHP Design	MSHP R/W	Exist. # Lanes
West 71 st Street	Primary arterial	120'	Four
South Elwood Avenue	Secondary arterial	100'	Two

UTILITIES: The subject tract has municipal water and sewer available.

SURROUNDING AREA: The subject tract is abutted on the east by large-lot single-family residential and vacant land, zoned AG and by small commercial uses, zoned CS ; on the north by vacant land, zoned AG; on the south by large-lot single-family residential uses, zoned AG; and on the west by large-lot single-family residential uses zoned RS-3. The Richard L. Jones Riverside Airport lies to the southeast of the subject site, and its operations may impact land uses on the subject property. Management at the Tulsa Airport Authority has been made aware of the proposal and any comments they submit will be transmitted to the TMAPC.

RELATIONSHIP TO THE COMPREHENSIVE PLAN:

The District 8 Plan, a part of the adopted Comprehensive Plan for the Tulsa Metropolitan Area, designates this area as being Medium Intensity-No Specific land use (10 acres) at the corner, Medium Intensity-Linear Development Area/Commercial along West 71st Street to the west and Low Intensity-No Specific land use to the south. To the north across West 71st

and

Street is another ten-acre Medium Intensity node. According to the Zoning Matrix, the requested RS-3 rezoning **is** in accord with all three Plan Map designations; the RM-O and CS zoning **are** in accord with the Zoning Matrix for the Medium Intensity-No Specific land use; the RM-O and CS **may be found** in accord with the Zoning Matrix for the Medium Intensity-Linear Development Area; and the RM-O **may be found** to be in accord with the Zoning Matrix for the Low Intensity-No Specific land use. However, since this development is to be accompanied by a PUD (PUD-738), the underlying zoning pattern and required floor area ratio will determine the standards for the entire parcel.

STAFF RECOMMENDATION:

Based on the Comprehensive Plan and surrounding existing and planned land uses, staff can support the requested rezoning for Z-7052, so long as the TMAPC deems the accompanying PUD-738 or some variation of it to be acceptable. Staff so recommends **APPROVAL** of RS-3, RM-O and CS for Z-7052.

03/28/07

**TULSA METROPOLITAN AREA PLANNING COMMISSION
CASE REPORT**

APPLICATION: PUD-738

TRS 8211

Atlas 0

CZM 51

PD-8 CD-2

TMAPC Hearing Date: March 28, 2007

(Continued from March 21, 2007)

Applicant: Charles E Norman

Tract Size: 39.19+ acres

ADDRESS/GENERAL LOCATION: Southwest corner West 71st Street and South Elwood Avenue

EXISTING ZONING: AG

EXISTING USE: Vacant

ZONING ORDINANCE: Ordinance number 11877, dated June 26, 1970, established zoning for the subject property.

PROPOSED ZONING: RS-3/RM-0/CS/PUD

PROPOSED USE: Multifamily, office, hotel, commercial

RELEVANT ZONING HISTORY:

Z-7008-SP-1/Z-6966-SP-1/Z-6967-SP-1 March 2006: All concurred in approval of a Corridor Site Plan on 176+ acres to permit a regional shopping center know as the Tulsa Hills site with a total of 1,554,194 square feet of maximum building floor area approved at a .25 floor area ratio. On property located east of US Highway 75 between West 71st and West 81st Streets and west of subject property.

Z-7008 March 2006: All concurred in approval of a request to rezone a 43.6+ acre tract from AG/RS-3 to CO on property located East side of U. S. Highway 75 South between West 71st Street South and West 81st Street South for regional shopping center known as Tulsa Hills.

Z-6966 February 2005: Approval was granted on a request to rezone a seventy-two acre tract located on the southeast corner of West 71st Street South and U. S. Highway 75 South from AG to CO. An accompanying recommendation was to amend the District Plan map to reflect the CO rezoning, which will be done when the annual plan updates are processed.

Z-6967 February 2005: Approval was granted on a request to rezone the sixty-two acre tract located on the northeast corner of West 81st Street South and U. S. Highway 75 South, from AG to CO.

Z-6871 November 2002: All concurred in approval of a request to rezone a 141-acre tract located on the northwest corner of West 81st Street and South Elwood Avenue and south of subject property, from AG to RS-3 for residential development.

Z-6858/PUD-660 July 2002: All concurred in approval of a request to rezone a 2.2+ acre tract from AG to CS/PUD and a Planned Unit Development for commercial uses on property located east of the southeast corner of South Elwood Avenue and West 71st Street.

Z-6001-SP-1/PUD-648 May 2001: A Planned Unit Development and Detail Corridor Site Plan were approved for hospital and office use on a 56 acre parcel located on the northeast corner of West 71st Street and U. S. High 75 South. The original CO zoning for this parcel had been approved in 1984 from AG to CO.

PUD-636/Z-5457-SP/Z-4825-SP October 2000: Approval was granted, subject to conditions of the PUD, for a Planned Unit Development on a 108-acre tract located on the northwest corner of West 81st Street South and South Highway 75 and west of the subject tract. The proposed uses include single-family and townhouse dwellings and commercial uses.

Z-6251 August 1989: All concurred in approval of a request to rezone three parcels containing one acre each and located south of the southwest corner of West 71st Street South and South Jackson Avenue, from RS-3 to AG.

PUD-384-A April 1987: The applicant requested a major amendment to PUD-384 to abandon previous uses that had originally been allowed and requested approval for Use Units 11, 14, 15 and 17. All concurred in approval of the request subject to conditions for the following uses, a mini-storage facility, a retail lawn and garden business with office and showroom. Use Unit 17 permitted the mini-storage facility only and all outdoor display for retail lawn and garden business would be only for seasonal merchandise. The property is located east of the southeast corner of South Elwood Avenue and West 71st Street.

Z-6017/PUD-384 May 1985: A request to develop a ten-acre tract located east of the southeast corner of South Elwood Avenue and West 71st Street for commercial use was approved with conditions for CS zoning on the north 550'. The requested IL zoning was denied.

AREA DESCRIPTION:

SITE ANALYSIS: The subject property is approximately 39.19 acres in size and is located southwest corner West 71st Street and South Elwood Avenue. The property appears to be vacant, semi-wooded and is zoned AG.

STREETS:

Exist. Access	MSHP Design	MSHP R/W	Exist. # Lanes
West 71 st Street	Primary arterial	120'	four
South Elwood Avenue	Secondary arterial	100'	two

UTILITIES: The subject tract has municipal water and sewer available.

SURROUNDING AREA: The subject tract is abutted on the east by large-lot single-family residential and vacant land, zoned AG and by small commercial uses, zoned CS ; on the north by vacant land, zoned AG; on the south by large-lot single-family residential uses, zoned AG; and on the west by large-lot single-family residential uses zoned RS-3. The Richard L. Jones Riverside Airport lies to the southeast of the subject site, and its operations may impact land uses on the subject property. Management at the Tulsa Airport Authority has been made aware of the proposal and any comments they submit will be transmitted to the TMAPC.

RELATIONSHIP TO THE COMPREHENSIVE PLAN:

The District 8 Plan, a part of the adopted Comprehensive Plan for the Tulsa Metropolitan Area, designates this area as being Medium Intensity-No Specific land use (10 acres) at the corner, Medium Intensity-Linear Development Area/Commercial along West 71st Street to the west and Low Intensity-No Specific land use to the south. To the north across West 71st

Street is another ten-acre Medium Intensity node. According to the Zoning Matrix, the requested RS-3 rezoning is in accord with all three Plan Map designations; the RM-O and CS zoning are in accord with the Zoning Matrix for the Medium Intensity-No Specific land use; the RM-O and CS may be found in accord with the Zoning Matrix for the Medium Intensity-Linear Development Area; and the RM-O may be found to be in accord with the Zoning Matrix for the Low Intensity-No Specific land use.

STAFF RECOMMENDATION:

PUD-738 is proposed as a mixed use development comprising 39.19 acres at the southwest corner of West 71st Street South, a primary arterial, and South Elwood Avenue, a secondary arterial. An accompanying application for rezoning from the existing AG to CS, RM-0 and RS-3 is being considered per Z-7052. The District 8 Comprehensive Plan classifies the intersection of West 71st Street South and South Elwood Avenue eligible for ten acres of medium intensity zoning with frontage along West 71st Street to the west of the node being within Linear Development Area 1.

The subject tract slopes gently from the intersection of West 71st Street South and South Elwood Avenue to the southwest. Hager Creek is located along the western boundary of the property and areas proposed for development within the corresponding floodplain may require an amendment to the City of Tulsa Regulatory Floodplain map. A major overhead power line traverses the property from the southwest to the northeastern border of the site and similar electrical transmission lines are located on the eastern boundary of the property along with a petroleum products pipeline. The property is also located within Zone #6, Runway Protection Zone, for R. L. Jones Jr. Riverside Airport (avigation notice will be required) and is subject to an FAA Airspace Study.

PUD-738 development concept divides the property into Development Areas A and B with commercial and hotel uses proposed for Development Area A and offices and multifamily residences proposed for Development Area B. The forty-acre area immediately south of PUD 738 is presently in multiple ownerships, but future development for single-family residences is anticipated per the Comprehensive Plan.

Staff finds the uses and intensities of development proposed and as modified by staff to be in harmony with the spirit and intent of the Code. Based on the following conditions, staff finds PUD-738 as modified by staff, to be: (1) consistent with the Comprehensive Plan; (2) in harmony with the existing and expected development of surrounding areas; (3) a unified treatment of the development possibilities of the site; and (4) consistent with the stated purposes and standards of the PUD Chapter of the Zoning Code.

Therefore, staff recommends **APPROVAL** of PUD-738 subject to TMAPC approval of requested zoning per Z-7052 and the following conditions:

1. The applicant's Outline Development Plan and Text be made a condition of approval, unless modified herein.
2. Development Standards:

DEVELOPMENT AREA A

LAND AREA:

Net Area:	18.07 AC	786,999 SF
Gross:	20.55 AC	895,202 SF

PERMITTED USES:

Uses permitted as a matter of right in Use Units 10, Off-Street Parking; 11, Offices and Studios; 12, Entertainment Establishments and Eating Establishments Other Than Drive-Ins; 13, Convenience Goods and Services; 14, Shopping Goods and Services; 19, Hotel and Motel uses only; and uses customarily accessory to permitted principal uses.

MAXIMUM BUILDING FLOOR AREA:

263,000 SF

MAXIMUM BUILDING HEIGHT:

Hotels and Offices

75 FT*

Other Permitted Uses

35 FT**

**Proposed height subject to FAA finding of no impact to airport operations through review of Airspace Study.*

***Architectural elements may exceed maximum building height with Detail Site Plan approval.*

OFF-STREET PARKING:

As required by the applicable Use Unit of the Tulsa Zoning Code.

MINIMUM BUILDING SETBACKS:

From right-of-way of West 71st Street South

50 FT

From the west boundary

50 FT#

From centerline of South Elwood Avenue

100 FT

From the south boundary

10 FT

Internal lot side yards to be established by Detail Site Plan.

#or greater subject to overland drainage easement associated with the City of Tulsa Regulatory Floodplain.

LANDSCAPING AND SCREENING:

A minimum of ten percent (10%) of the net land area of a lot shall be improved as internal landscaped open space in accord with the provisions of the Landscape Chapter of the Tulsa Zoning Code. This shall include those landscaped areas required for meeting street yard and parking area requirements per the Landscape Chapter of the Tulsa Zoning Code. A minimum six-foot high screening fence shall be required adjacent to the south 900 feet of the west boundary of Development Area A, east of the floodplain.

LIGHTING:

Exterior light standards for Development Area A shall not exceed 25 feet in height and shall be hooded and directed downward and away from the boundaries of the planned unit development. Shielding of outdoor lighting shall be designed so as to prevent the light producing element or reflector of the light fixture from being visible to a person standing at ground level in adjacent residential areas. Compliance with these standards shall be verified by application of the Kennebunkport Formula. Consideration of topography must be included in the calculations.

TRASH, MECHANICAL AND EQUIPMENT AREAS:

All trash, mechanical and equipment areas (excluding utility service transformers, pedestals, or equipment provided by franchise utility providers), including building mounted, shall be

screened from public view in such a manner that the areas cannot be seen by persons standing at ground level.

SIGNS:

- (a) One ground sign shall be permitted for each lot on the West 71st Street South frontage with a maximum of 150 square feet of display surface area and 20 feet in height.
- (b) One center/ tenant identification sign shall be permitted at the principal entrance from West 71st Street South with a maximum of 200 square feet of display surface area and 25 feet in height.
- (c) One hotel identification sign shall be permitted at the westernmost entrance from West 71st Street South with a maximum of 100 square feet of display surface area and fifteen (15) feet in height.
- (d) Ground signs must maintain a minimum separation of 100 feet as required per Section 1103.B.2.4 of the Tulsa Zoning Code.
- (e) Wall signs shall be permitted not to exceed 1.5 square feet of display surface area per lineal foot of building wall to which attached. The length of a wall sign shall not exceed 75% of the frontage of the building.

VEHICULAR ACCESS AND CIRCULATION:

All vehicular access to West 71st Street South and South Elwood Avenue shall be subject to the approval of Traffic Engineering. Traffic signals on West 71st Street South as indicated on Exhibit "C" shall not be permitted unless a Traffic Impact Study reviewed by Traffic Engineering finds Federal Signal Warrants are met. No signals are anticipated as being necessary.

An internal street providing access to each internal lot (any lot not having frontage on a public street) within Development Area A and access to each lot within Development Area B shall be required.

PEDESTRIAN ACCESS AND CIRCULATION:

Sidewalks shall be provided along both sides of the internal street and along West 71st Street South and South Elwood Avenue. In addition, designated pedestrian access (i.e., paving or striping) shall be provided from arterial and private street sidewalks to each building with frontage on that arterial or private street.

TRANSIT:

A bus pull-out lane shall be provided on West 71st Street South in accord with the recommendations of Tulsa Transit and Transportation Planning staff.

AVIGATION NOTICE:

There shall be placed on the face of the plat or plats of any portion of PUD 738 an Avigation Notice which shall state the following:

Notice is hereby given that owners and users of aircraft of all types operate on a frequent basis in the airspace above and in the vicinity of this plat of land. Said aircraft, when operated

in a lawful manner, are allowed free and unobstructed passage in the airspace on, upon, over, across, adjacent to, above and in the vicinity of this plat of land. The lawful operation of aircraft is known to generate noise, vibration, and other effects as may be inherent in the operation of or flight or passage in and through said airspace which result directly or indirectly from the operations of aircraft or the airport, now and in the future, including by not limited to, ground and flight operations of aircraft at, over, on or in the vicinity of the airport, and regardless of whether arriving, departing, maneuvering, or en route, and it must be further recognized that all such operations may increase in the future.

Notice is also given that rules and regulations defined in Federal Aviation Regulations (FARs), including but not limited to FAR Part 77, may limit the height of buildings, structures, poles, trees or other objects whether natural or otherwise, located or to be located on property within this plat of land and may require, prior to construction, the submission of an application as may be required by the Federal Aviation Administration to ensure that the safe operation of aircraft is not impacted by said object.

DEVELOPMENT AREA B:

LAND AREA:

Net Area:	17.94 AC	781,554 SF
Gross:	18.64 AC	812,089 SF

PERMITTED USES:

Uses permitted as a matter of right in Use Units 5, Community Services and Similar Uses, Children’s Nursery and Church only; 7a, Townhouse Dwellings; 8, Multi-family Dwellings and Similar Uses; 10, Off-Street Parking; 11, Offices and Studios; and uses customarily accessory to permitted principal uses.

MAXIMUM NUMBER OF DWELLING UNITS: 264

MAXIMUM BUILDING FLOOR AREA:

Offices	12,000 SF
Churches and Children’s Nursery	3,305 SF

MAXIMUM BUILDING HEIGHT:

Multi-family Dwellings	48 FT [^]
Offices	35 FT ^{^^}
Churches and Children’s Nursery	35 FT ^{^^}

[^]Proposed height subject to FAA finding of no impact to airport operations through review of Airspace Study.

^{^^}Architectural elements may exceed maximum building height with Detail Site Plan approval.

MINIMUM BUILDING SETBACKS:

From the north boundary	10 FT
From the west boundary	50 FT+
From the east boundary/ centerline of South Elwood Avenue	100 FT
From the south boundary	

For buildings exceeding 35 feet in height	125 FT
For buildings 35 feet or less in height	75 FT

+or greater subject to overland drainage easement associated with the City of Tulsa Regulatory Floodplain.

MINIMUM SETBACK OF MULTI-FAMILY BUILDINGS FROM OVERHEAD TRANSMISSION LINES AND POWER POLES: 75 FT

MINIMUM PARKING AREA AND ACCESS DRIVE SETBACK:
From the south boundary of Area B 25 FT

LIVABILITY SPACE:
A minimum of 600 square feet of livability space shall be provided for each multi-family dwelling unit.

LANDSCAPE AND SCREENING REQUIREMENTS:
A minimum of fifteen percent (15%) of the net land area of a lot for offices shall be improved as internal landscaped open space in accord with the provisions of the Landscape Chapter of the Tulsa Zoning Code. This shall include those landscaped areas required for meeting street yard and parking area requirements per the Landscape Chapter of the Tulsa Zoning Code.

A minimum six-foot high screening fence shall be required adjacent to the west boundary of Development Area, east of the floodplain. A minimum six foot high masonry screening wall and 25 foot landscaped buffer shall be required along the south boundary of Development Area B. This requirement may be modified by TMAPC detail site plan approval with regard to the southwest corner of Development Area B for accommodation of the floodplain.

SIGNS:
(a) One ground sign shall be permitted for each lot developed for office use with a maximum display surface area each of 32 square feet and 12 feet in height.
(b) One ground sign shall be permitted at the principal entrance from South Elwood Avenue to a multi-family development with a maximum of 32 square feet of display surface area and 12 feet in height.

LIGHTING:
Exterior light standards for Development Area B shall not exceed 15 feet in height and shall be hooded and directed downward and away from the boundaries of the planned unit development. Shielding of outdoor lighting shall be designed so as to prevent the light producing element or reflector of the light fixture from being visible to a person standing at ground level in adjacent residential areas. Compliance with these standards shall be verified by application of the Kennebunkport Formula. Consideration of topography must be included in the calculations.

TRASH, MECHANICAL AND EQUIPMENT AREAS:
All trash, mechanical and equipment areas (excluding utility service transformers, pedestals, or equipment provided by franchise utility providers), including building mounted, shall be screened from public view in such a manner that the areas cannot be seen by persons standing at ground level.

VEHICULAR ACCESS AND CIRCULATION:

All vehicular access to South Elwood Avenue shall be subject to the approval of Traffic Engineering. An internal street providing access to each internal lot (any lot not having frontage on a public street) within Development Area A and access to each internal lot within Development Area B shall be required.

AVIGATION NOTICE:

There shall be placed on the face of the plat or plats of any portion of PUD 738 an Avigation Notice which shall state the following:

Notice is hereby given that owners and users of aircraft of all types operate on a frequent basis in the airspace above and in the vicinity of this plat of land. Said aircraft, when operated in a lawful manner, are allowed free and unobstructed passage in the airspace on, upon, over, across, adjacent to, above and in the vicinity of this plat of land. The lawful operation of aircraft is known to generate noise, vibration, and other effects as may be inherent in the operation of or flight or passage in and through said airspace which result directly or indirectly from the operations of aircraft or the airport, now and in the future, including by not limited to, ground and flight operations of aircraft at, over, on or in the vicinity of the airport, and regardless of whether arriving, departing, maneuvering, or en route, and it must be further recognized that all such operations may increase in the future.

Notice is also given that rules and regulations defined in Federal Aviation Regulations (FARs), including but not limited to FAR Part 77, may limit the height of buildings, structures, poles, trees or other objects whether natural or otherwise, located or to be located on property within this plat of land and may require, prior to construction, the submission of an application as may be required by the Federal Aviation Administration to ensure that the safe operation of aircraft is not impacted by said object.

3. No zoning clearance permit shall be issued for a lot within the PUD until a detail site plan for the lot, which includes all buildings, parking and landscaping areas, has been submitted to the TMAPC and approved as being in compliance with the approved PUD development standards.
4. A detail landscape plan for each lot shall be approved by the TMAPC prior to issuance of a building permit. A landscape architect registered in the State of Oklahoma shall certify to the zoning officer that all required landscaping and screening fences have been installed in accordance with the approved landscape plan for the lot, prior to issuance of an occupancy permit. The landscaping materials required under the approved plan shall be maintained and replaced as needed, as a continuing condition of the granting of an occupancy permit.
5. No sign permits shall be issued for erection of a sign on a lot within the PUD until a detail sign plan for that lot has been submitted to the TMAPC and approved as being in compliance with the approved PUD development standards.
6. All trash, mechanical and equipment areas, including building mounted, shall be screened from public view in such a manner that the areas cannot be seen by persons standing at ground level.

7. The Department of Public Works or a professional engineer registered in the State of Oklahoma shall certify to the appropriate City official that all required stormwater drainage structures and detention areas serving a lot have been installed in accordance with the approved plans prior to issuance of an occupancy permit on that lot.
8. A property owners association shall be created and vested with sufficient authority and financial resources to properly maintain all private streets and common areas, including any stormwater detention areas, security gates, guard houses or other commonly owned structures within the PUD.
9. All private roadways shall have a minimum right-of-way of 30' and be a minimum of 26' in width for two-way roads and 18' for one-way loop roads, measured face-to-face of curb. All curbs, gutters, base and paving materials used shall be of a quality and thickness which meets the City of Tulsa standards for a minor residential public street. The maximum vertical grade of private streets shall be ten percent.
10. The City shall inspect all private streets and certify that they meet City standards prior to any building permits being issued on lots accessed by those streets. The developer shall pay all inspection fees required by the City.
11. No building permit shall be issued until the requirements of Section 1107F of the Zoning Code have been satisfied and approved by the TMAPC and filed of record in the County Clerk's office, incorporating within the restrictive covenants the PUD conditions of approval and making the City beneficiary to said covenants that relate to PUD conditions.
12. Subject to conditions recommended by the Technical Advisory Committee during the subdivision platting process which are approved by TMAPC.
13. Entry gates or guardhouses, if proposed, must receive detail site plan approval from TMAPC, Traffic Engineering and Tulsa Fire Department, prior to issuance of a building permit for the gates or guard houses.
14. Approval of the PUD is not an endorsement of the conceptual layout. This will be done during detail site plan review or the subdivision platting process.
15. There shall be no outside storage of recyclable material, trash or similar material outside a screened receptacle, nor shall trucks or truck trailers be parked in the PUD except while they are actively being loaded or unloaded. Truck trailers and shipping containers shall not be used for storage in the PUD.

Comments from 3-1-07 TAC:

General: Predevelopment meeting was held 2-19-07.

Water: A looped water main extension will be required using two feeds.

Fire: Where a portion of the facility or building hereafter constructed or moved into or within the jurisdiction is more than 400 feet (122 m) from a hydrant on a fire apparatus access road, as measured by an approved route around the exterior of the facility or building, on-site fire hydrants and mains shall be provided where required by the fire code official.

Exceptions:

1. For Group R-3 and Group U occupancies, the distance requirement shall be 600 feet (183 m).

2. For buildings equipped throughout with an approved automatic sprinkler system installed in accordance with Section 903.3.1.1 or 903.3.1.2, the distance requirement shall be 600 feet (183 m).

Cul-de-sacs shall have a turn-around radius of not less than thirty-eight (38) feet of paving, utilizing a rolled curb section wherever possible, and a radius of fifty (50') of right-of-way at the property line. Cul-de-sacs greater than two hundred and fifty (250) feet in length shall have a turn-around radius of not less than forty (40') feet of paving and a radius of fifty-two (52') feet of right-of-way at the property line. Alternative turn-arounds may be utilized with the approval of the Fire Marshall or his designee. Examples of these include utilization of acceptable hammerheads or "Y" 's or utilizations of approved residential sprinkler systems (National Fire Prevention Association - NFPA). To meet the needs of specific situations, this requirement may be changed by the Planning Commission, upon comment by the Technical Advisory Committee, when topography or other limiting factors make such changes necessary for securing the best overall design. A modification of these Regulations is not required. In the southwest corner of the project there are two parking lots that shall be provided with a means to turn a fire truck around.

Stormwater: The floodplain must be placed in a reserve/overland drainage easement. Any modifications to the floodplain that reduce storage volume will require compensatory storage easements. A City of Tulsa Regulatory Floodplain map amendment may be required.

Wastewater: Sanitary Sewer must be extended to provide service to all lots within the proposed subdivision. Provide adequate depth and diameter of pipe to allow service to the area west of the PUD area. If you connect to the existing main line along the North side of E 71st St, then Excess Capacity Fees will be assessed for the area draining to the North.

Transportation: Right-of-way dedication will be required on Elwood (a Secondary Arterial) and for a 30' radius or 28' leg triangle at the intersection. Right-of-way on 71st St. S. is 70 ft for full length of frontage, a portion of which exceeds minimum Major Street and Highway Plan requirements, but all of which the City desires to remain for future 71st St. improvements. Public or private street access to a hotel site from the arterial(s) would be supported. Sidewalks are shown, but wheelchair ramp at the major intersection is not shown and will be required.

Traffic: Relocate the driveway connection for the apartments to the center access aisle at least 100ft west and eliminate parking within the 100ft approach. The westernmost access on 71st Street and the center access on Elwood are recommended for widening to provide 2 out/1 in bound lanes for increased capacity in addition to those shown widened on Exhibit "A". Provide a Mutual Access Easement from the Hotel Lot to 71st Street or a panhandle ownership. Please delete the symbols shown on Exhibit "C" implying a "Traffic Signal" at two of the 71st Street access points unless a Traffic Impact Study reviewed by this office finds Federal Signal Warrants are met. No signals are anticipated.

GIS: No comments.

Street Addressing: No comments.

County Engineer: No comments.

MSHP: East 71st Street South, Existing 2 lanes, Primary Arterial. Elwood, secondary arterial. Sidewalks should be constructed as shown in the site plan along 71st and along Elwood, per subdivision regulations. The internal pedestrian circulation plan should be executed as well.

LRTP: E. 71st St. S., between S. Elwood Ave. and S. Union Ave, planned 6 lanes. S. Elwood Ave, between E. 71st St. S. and E. 81st St. S., existing 2 lanes. Sidewalks should be constructed if non-existing or maintained if existing.

TMP: No Comment.

Transit: Currently, Tulsa Transit operates an existing route on 71st St. S. According to MTTA future plans, this location will continue to be served by transit routes. 71st will likely see increased traffic with construction of Tulsa Hill Shopping center, and with the addition on Multi-family units in Development Area "B" and commercial facilities in Development area "A", transit use is likely to increase. Therefore, a transit cut-in along 71st is needed.

Tulsa Airport Authority: Subject tract located with Zone #6, Traffic Pattern Zone. Low density residential development permitted subject to inclusion of Avigation Notice on any residential plat. Proposed building heights subject to Federal Aviation Administration finding no impact to airport operations through review of an Airspace Study.

03/28/07

Tomlinson, Delise

From: Fox, Patrick
Sent: Monday, March 12, 2007 1:54 PM
To: Tomlinson, Delise
Subject: Bus Pullout Request



March 12, 2007

Chip Ard, Chairperson
TMAPC
201 West 5th Street, Ste 600
Tulsa, OK 74103

To Whom it May Concern:

I am writing on behalf of Tulsa Transit to support INCOG's request for a bus pull-out lane on West 71st Street for the PUD on the Southwest corner of West 71st St. & South Elwood Ave.

Tulsa Transit has a route # 471 – 71st Street which travels east and west on 71st Street in Tulsa. There is strong ridership on this route and we anticipate the ridership will continue growing. If more funding becomes available, Tulsa Transit may expand service on this route. We have no plans to reduce or eliminate service on this high-traffic route.

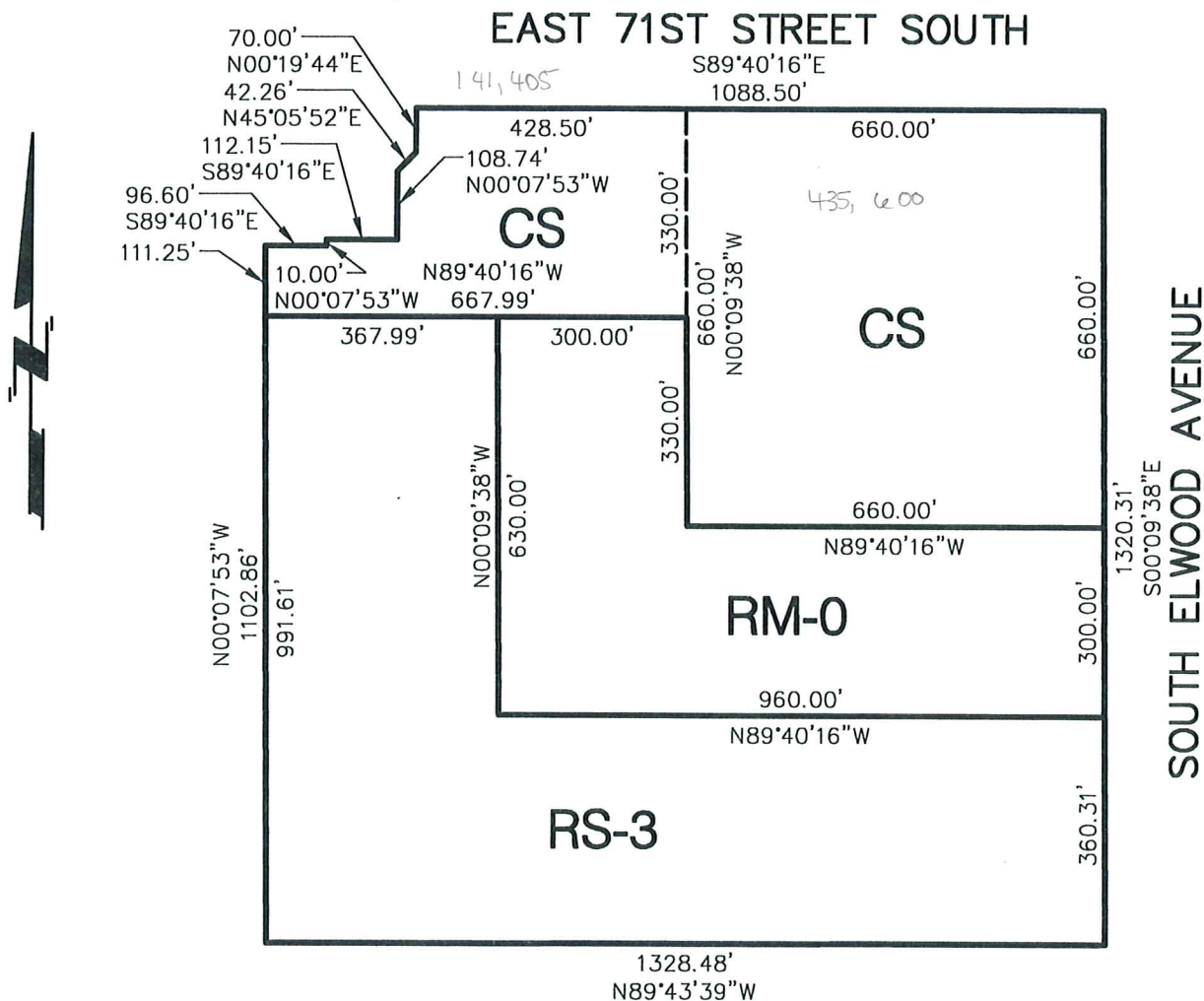
If you have any questions, please feel free to contact me at 699-0223.

Sincerely,

Cynthia Staab
Assistant General Manager

2007

7100 Elwood Center



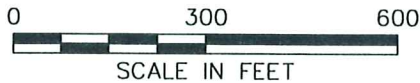
**GROSS
AREA**

CS.....12.778	AC.....556,610	SF X 0.50 = 278,305	BUILDING FLOOR AREA	
CS.....1.200	AC.....52,272	SF / 1200 = 43	UNITS	} 265 DWELLING UNITS
RM-0.....8.884	AC.....386,986	SF / 2800 = 138	UNITS	
RS-3.....16.332	AC.....711,422	SF / 8400 = 84	UNITS	

EXHIBIT 'F'

Zoning Application and Analysis

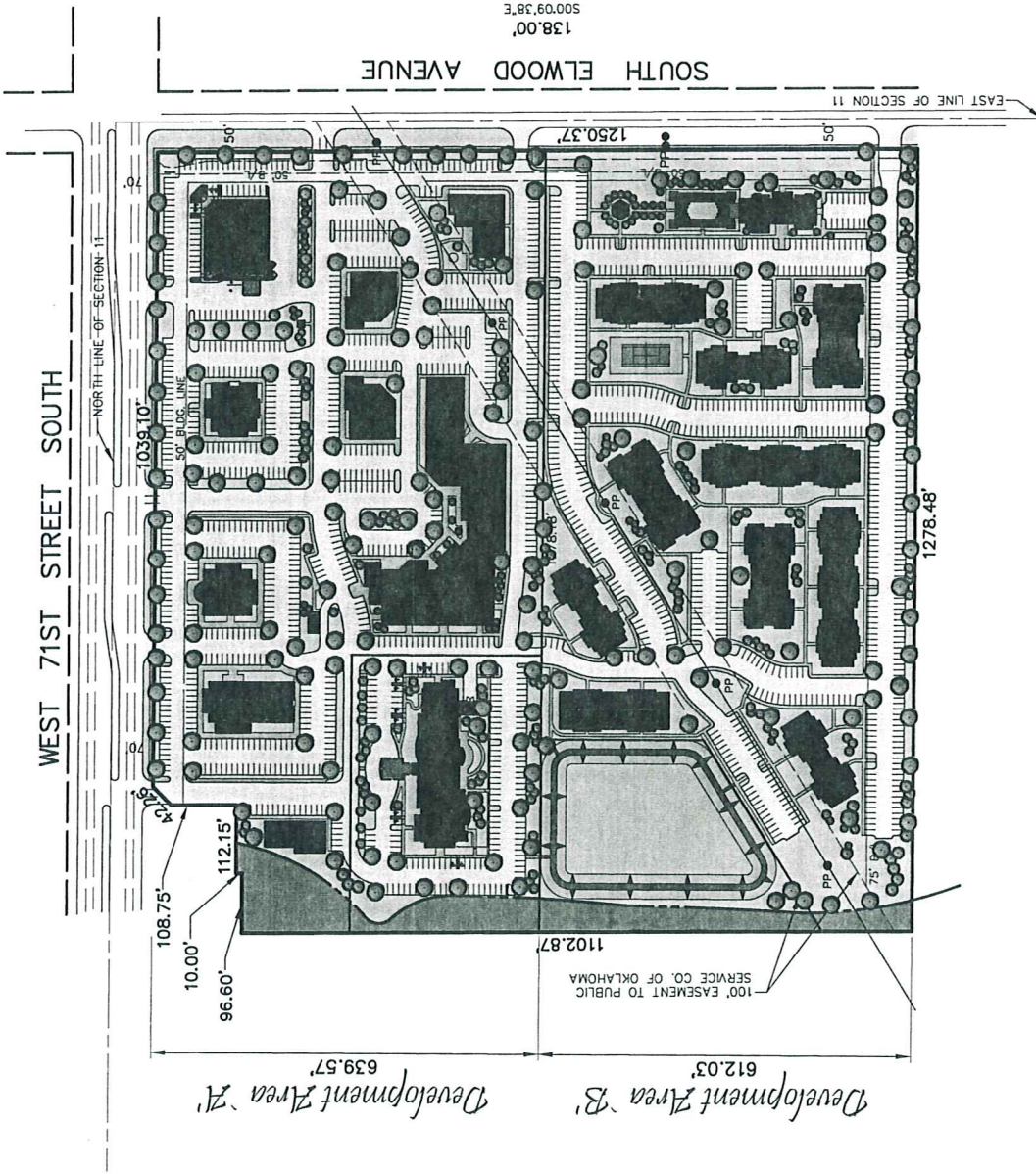
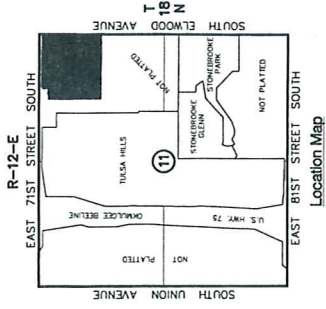
Z-7052 PUD 738



SACK AND ASSOCIATES, INC.
 Santa Fe Depot, 111 South Elgin Avenue, Tulsa, Oklahoma 74120-1816
 Ph: 918.592.4111 Fax: 918.592.4229 E-mail: sai@sackandassociates.com
 CA Number 1783 (PE/LS) and 1462 (LA), Exp. June 30, 2007

Project: 71ST AND ELWOOD-A Drawing: EXHBT01C XREFs: COPYRITE S-811X T-SAJ3
 Drawn: KDD,GHJ Order: F366B File: 1812.11 Drawer: C Plotted: 07 FEB 2007

0018

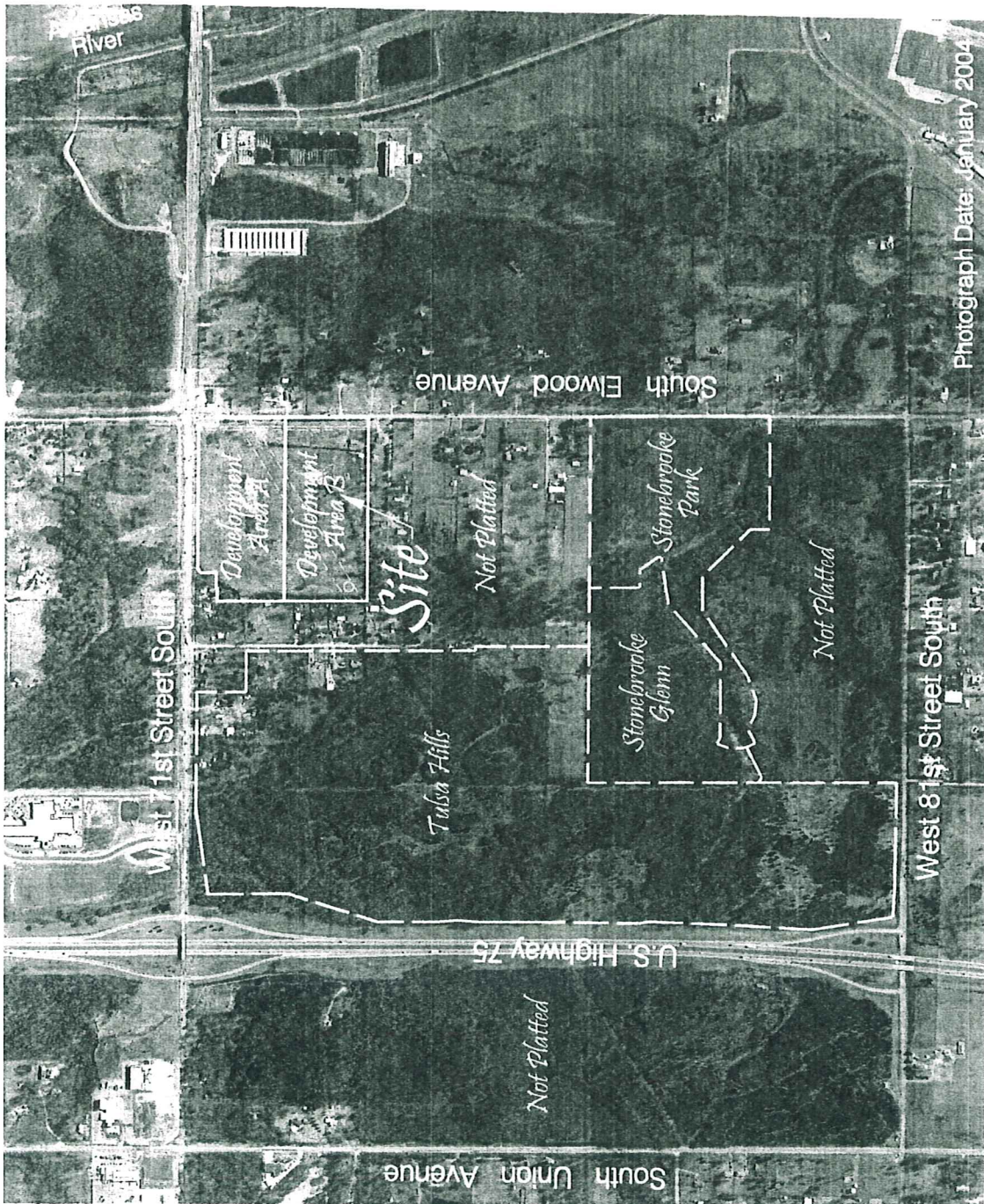


7100 Elwood Center

Concept Illustration
EXHIBIT 'A'
 Planned Unit Development Number 738

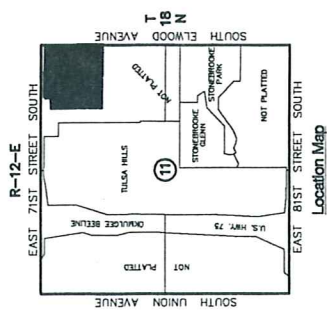
SACK AND ASSOCIATES, INC.
 10000 West 10th Street, Suite 100
 Oklahoma City, Oklahoma 73160
 Phone: 405.522.4111 Fax: 405.522.4229 E-mail: info@sackandassociates.com
 CA Number 1983 (P/L/S) and 1482 (LA), Exp. June 30, 2007

Drawing: 11000A XREFs: COPRIITE S-1117X I-5A-3
 Drawn: GJU Date: 7/30/07 File: 1012.11 - Drawn: RJD
 Revised: 07 FEB 2007

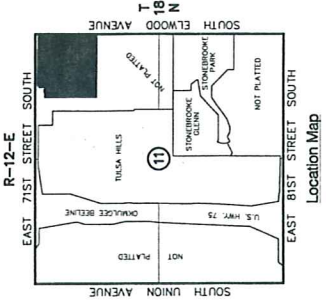
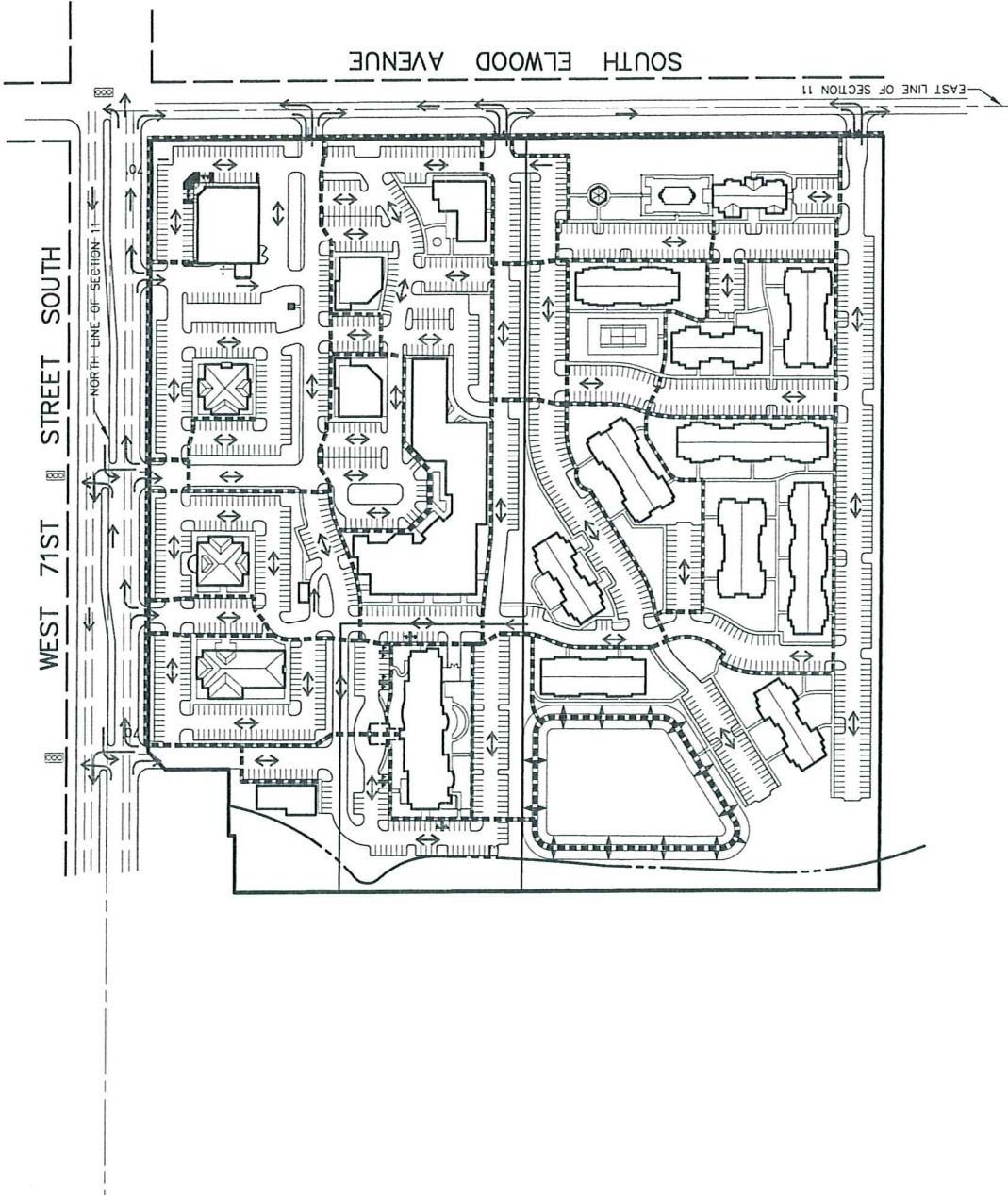


SACK AND ASSOCIATES, INC.
 5015 E. 19th Avenue, Tulsa, Oklahoma 74103-1816
 Phone: 918.432.9111 Fax: 918.432.9229
 Email: info@sackandassociates.com
 CA Number 1783 (06/15) and 1482 (L.A.) Exp. June 30, 2007
 REF: COPYRIGHT S-1117X T-5A3
 Drawing: P4000A
 Project: 7157 AND ELMWOOD-A
 Drawn: DJH
 Date: 10/21/11
 Designer: PUD
 Plotted: 08 FEB 2007

Photograph Date: January 2004



7100 Elwood Center
 Aerial Photo, Adjacent Land Uses
 and Development Areas
EXHIBIT 'B'
 Planned Unit Development Number 738



Legend:

- TRAFFIC SIGNAL
- VEHICULAR CIRCULATION
- PRIMARY PEDESTRIAN CIRCULATION

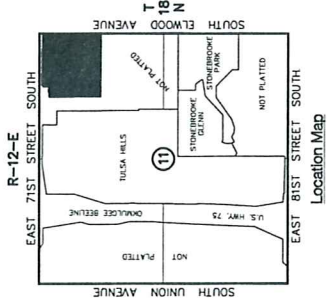
SACK AND ASSOCIATES, INC.
 1000 S. Bascom Avenue
 Suite 200
 San Jose, CA 95128
 Tel: 415.992.4111 Fax: 415.992.4229 E-mail: sack@saassociates.com
 CA Number 1983 (PE/LS) and 1482 (LA), Exp. June 30, 2007

Project: 71ST AND ELWOOD-A
 Sheet: 011
 Date: 08/11/07

7100 Elwood Center

Access and Circulation
 Vehicular and Pedestrian
EXHIBIT 'C'

Planned Unit Development Number 738



Legend

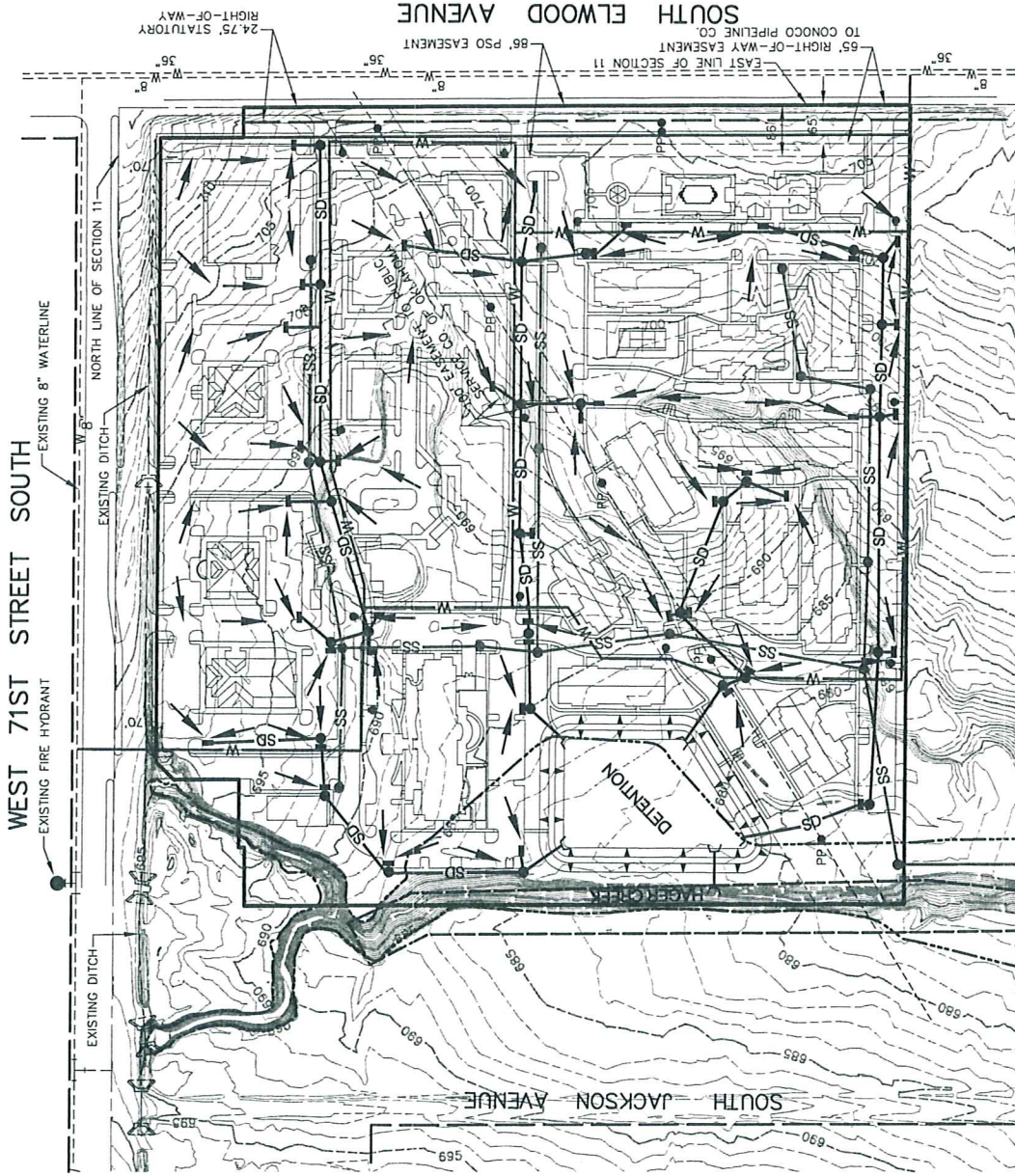
- W- - EXISTING WATERLINE
- SS- - EXISTING SANITARY SEWER LINE
- SD- - EXISTING STORM SEWER LINE
- W- - PROPOSED WATERLINE
- SS- - PROPOSED SANITARY SEWER
- SD- - PROPOSED STORM SEWER
- - DRAINAGE FLOW
- - CITY OF TULSA
- - REGULATORY FLOODPLAIN
- - FEMA FLOODPLAIN

7100 Elwood Center

Site Map, Drainage Concept and Existing and Proposed Utilities

EXHIBIT 'D'

Planned Unit Development Number 738



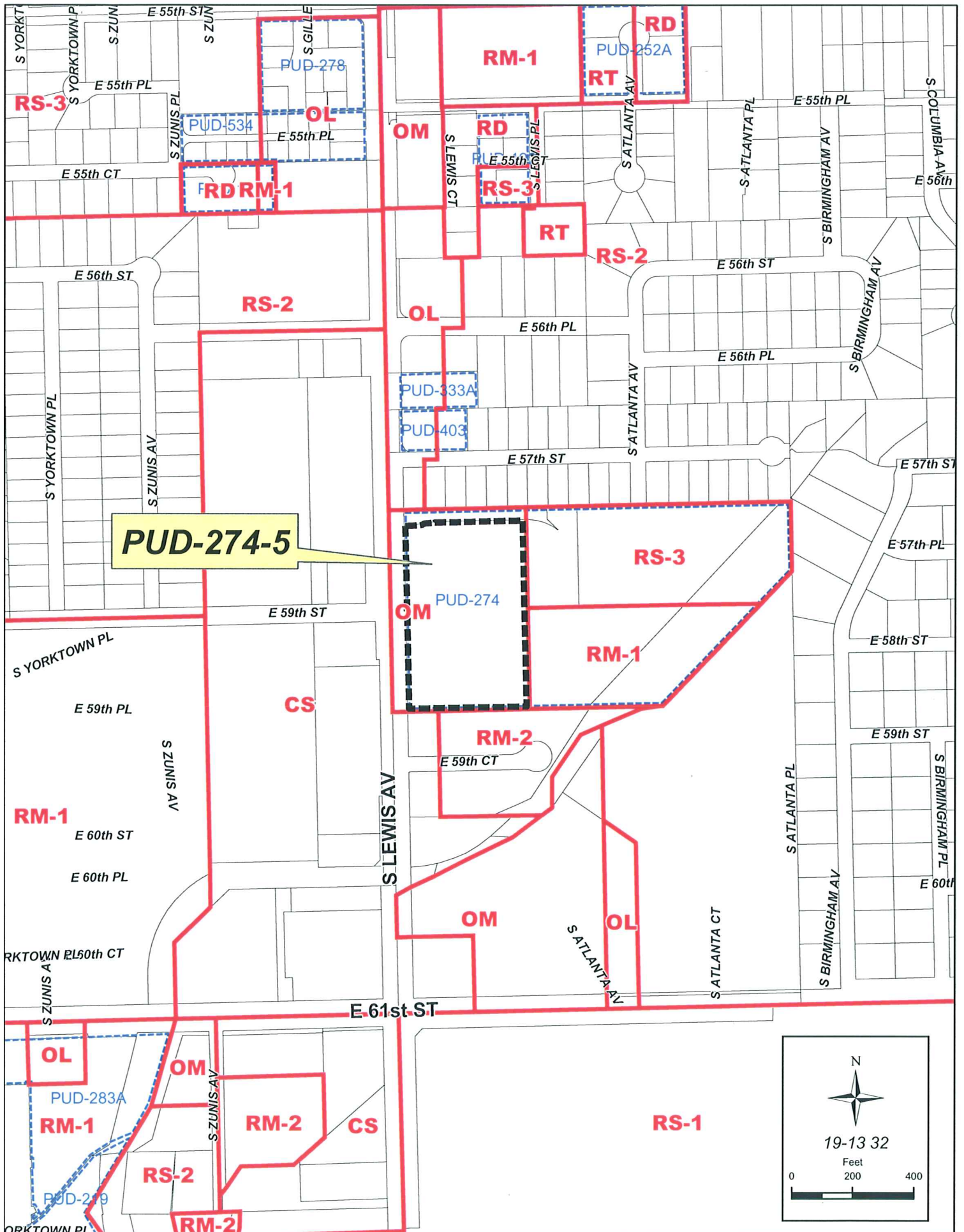
SACK AND ASSOCIATES, INC.

1000 West 10th Street
 Tulsa, Oklahoma 74103
 Phone: 918.592.4111 Fax: 918.592.4229 E-mail: info@sackassociates.com
 CA Number 1793 (P/C/S) and 1482 (L.A.), Exp. June 30, 2007

Drawing: P4002A XREF: COPYWRITE S-1117X F-5A43
 Date: 04/18/2007 1:58:00 PM
 File: 1012.11 - Bower; P40



Project: 7100 ELWOOD-A
 Drawn: DAVID STANTON, 1/24/08

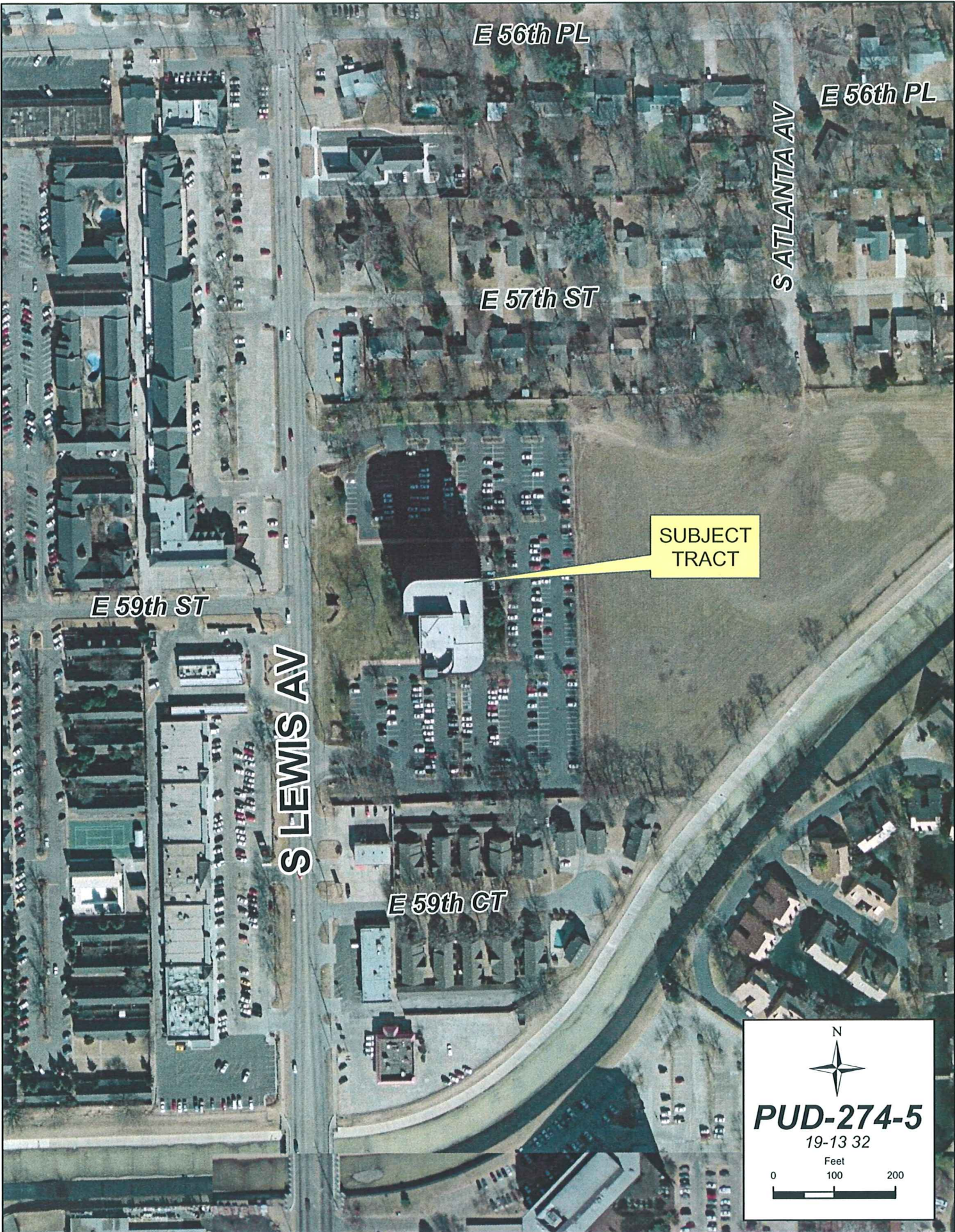




N

PUD-274-5
19-13 32

0 200 400
Feet



E 56th PL

E 56th PL

S ATLANTA AV

E 57th ST

SUBJECT TRACT

E 59th ST

S LEWIS AV

E 59th CT

N

PUD-274-5
19-13 32

Feet
0 100 200

March 28, 2007

STAFF RECOMMENDATION

PUD- 274-5

Minor Amendment – Bank of Oklahoma; 5727 South Lewis Avenue; Lot 1, Block 1, One Summit Plaza; Development Area B; OM/PUD 274; PD-18; CD-9

The applicant is requesting a minor amendment to PUD 274 for an increase in permitted wall signage to allow an additional wall sign. TMAPC denied a similar request, PUD 274-4, on November 15, 2006, finding that the signage not only exceeded PUD standards but also allowable signage based on underlying zoning. Subsequently, an application for a variance was filed with and approved by the City of Tulsa Board of Adjustment allowing the signage as proposed.

Development standards currently permit wall signs as follows:

Wall or canopy signs shall be limited to one sign for the multi-story office building, not exceeding a display surface area of 64 square feet, and one sign for each of the other office buildings within the project, not exceeding a display surface area of 32 square feet for each sign.

In addition, three ground signs with a maximum aggregate display surface area of 384 square feet are also permitted. (PUD 274 originally permitted two signs not to exceed 192 square feet of display surface area each. PUD 274-1 approved 4/23/86 distributed the display surface area among three ground signs.)

On January 23, 2007, the BOA approved an increase in wall signage as follows:

One wall sign with a display surface area of 260 square feet on the multi-story office building in addition to an existing, permitted 49 square foot of display surface area wall sign on the bank drive-thru canopy for an aggregate display surface area of 309 square feet.

BOA approved the variance finding that the requested signage was appropriate for a multi-story office building which is located within a medium intensity office district (OM) with frontage on a secondary arterial and which faces existing commercial development.

Therefore, staff recommends **APPROVAL** of PUD 274-5 subject to the following conditions:

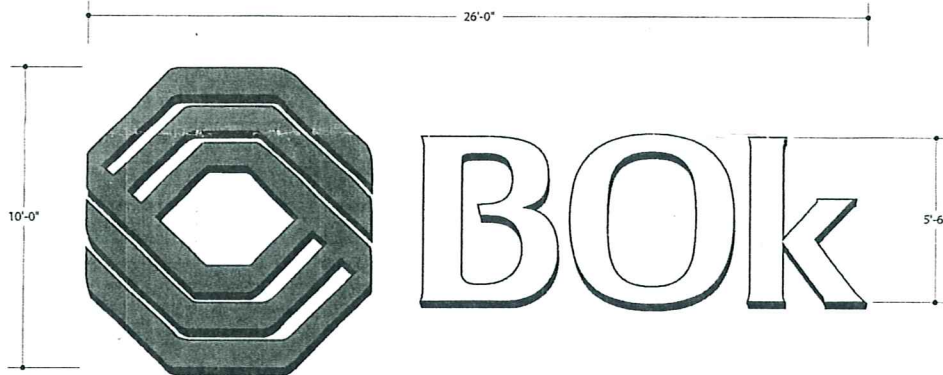
A maximum of two wall signs shall be permitted as follows:

- (a) One wall sign on the multi-story office building with a maximum display surface area of 260 square feet and located at the cap of the western face of the existing building;
- (b) One wall sign on the west facing surface of the drive-in banking canopy not to exceed 49 square feet of display surface area.



Photo representation is for position only and is not to scale. See measured drawing for actual production size

OPTION A



SCALE - 1/4" = 1'

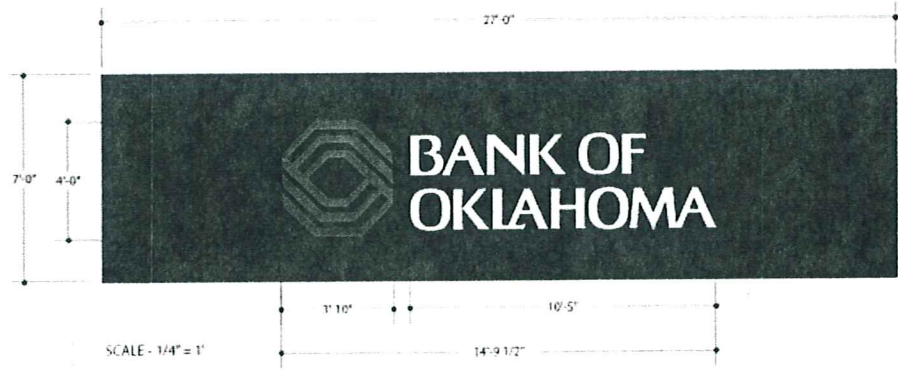
CHANNEL LOGO & LETTERS
 .063 P/F BLACK ALUMINUM 5" RETURNS
 15mm 8500 WHITE NEON ILLUMINATION
 3/16" RED ACRYLIC FOR LOGO & WHITE ACRYLIC LENS COVERS FOR LETTERS
 1" BLACK TRIM CAP

MORE THAN 25 FOOT CANDLES @

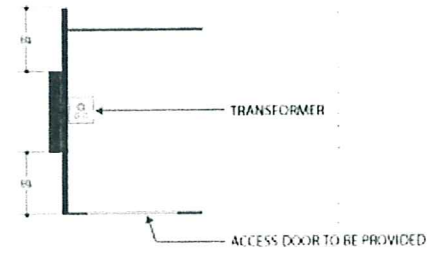
 CLAUDE NEON FEDERAL SIGNS 533 South Rockford Tulsa, Oklahoma 74120 ph: 918.587.7171 fax: 918.587.7176	I hereby give my approval to proceed with fabrication of the signage depicted in this drawing in order to meet the project objectives in a timely fashion. I understand that any changes (additions, deletions, or modifications) to the fundamental structure, underlying design, or the specific features of this signage may result in slippage of the completion date, additional resource requirements or additional cost.		<input type="checkbox"/> Approved as Shown <input type="checkbox"/> Approved as Noted	ISSUES/REVISIONS: 08.29.06 REVIEW	SIGN TYPE: CHANNEL LETTERS	SHEET NO. G-1.0
	PROJECT/CLIENT NAME: BOK	LOCATION/ADDRESS: S. LEWIS	ACCOUNT EXECUTIVE: JAMES ADAIR	DRAWN BY: RINGO	DWG. #/FILE REFERENCE #: CNF5246	DATE- ORIGINAL DWG: 29.AUG.2006





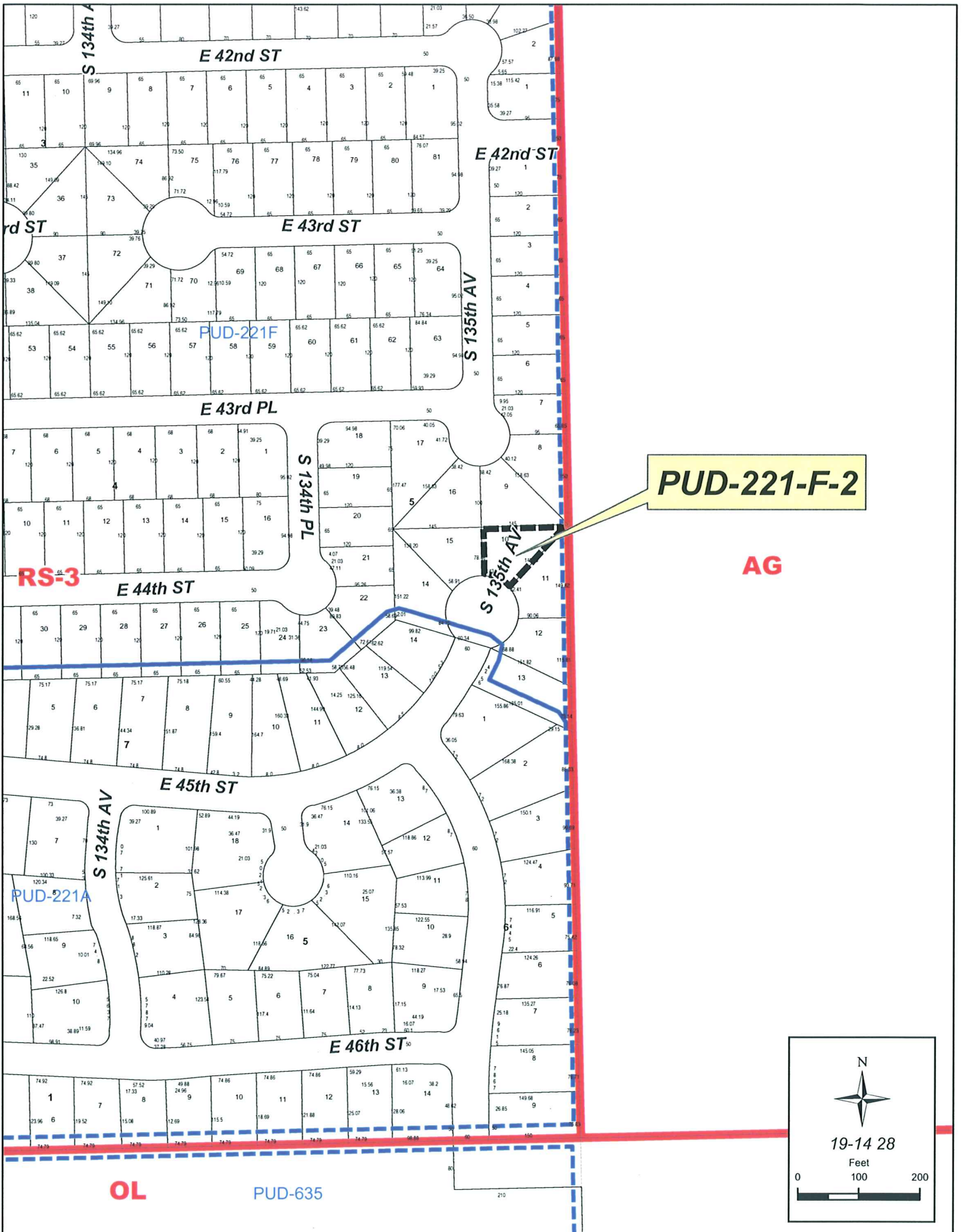
**BOK SUMMIT
WEST ELEVATION: ENLARGED**
SCALE: 1/4" = 1'



- LOGO**
 .040 P/F BLACK ALUMINUM 5" RETURNS
 CLEAR RED NEON ILLUMINATION
 30 MA REMOTE TRANSFORMERS
 3/16" RED PLEX.
 1" BLACK TRIMCAP
- LETTERS**
 .040 P/F BLACK ALUMINUM 5" RETURNS
 8500 WHITE NEON ILLUMINATION
 30 MA REMOTE TRANSFORMERS
 3/16" WHITE PLEX.
 1" BLACK TRIMCAP



 533 South Rockford Tulsa, Oklahoma 74120 ph: 918.587.7171 fax: 918.587.7176	I hereby give my approval to proceed with fabrication of the signage depicted in this drawing in order to meet the general objectives of a timely fashion. I understand that any changes (additions, deletions, or modifications) to the fundamental structure, mounting design, or the specific features of this signage may result in change of the complete cost, additional resource requirements or additional time.	<input type="checkbox"/> Approved as Shown <input type="checkbox"/> Approved as Noted	ISSUES/REVISIONS: 09.28.06 REVIEW	SIGN TYPE: CHANNEL LETTERS	SHEET NO. G-1.0
		PROJECT/CLIENT NAME: BOK	LOCATION/ADDRESS: S. LEWIS	ACCOUNT EXECUTIVE: JAMES ADAIR	DRAWN BY: RINGO
<small>These drawings are the sole property of Creative Neon Federal Signs, Inc. and are the result of original work by its employees. They are submitted for the sole purpose of your consideration of whether to purchase them as they are produced. Your CNF signage manufactured according to these plans. CNF's failure to call attention of errors herein is deemed to constitute negligence.</small>	DWG. SCALE: AS NOTED				



PUD-221-F-2

AG

RS-3

PUD-221A

OL

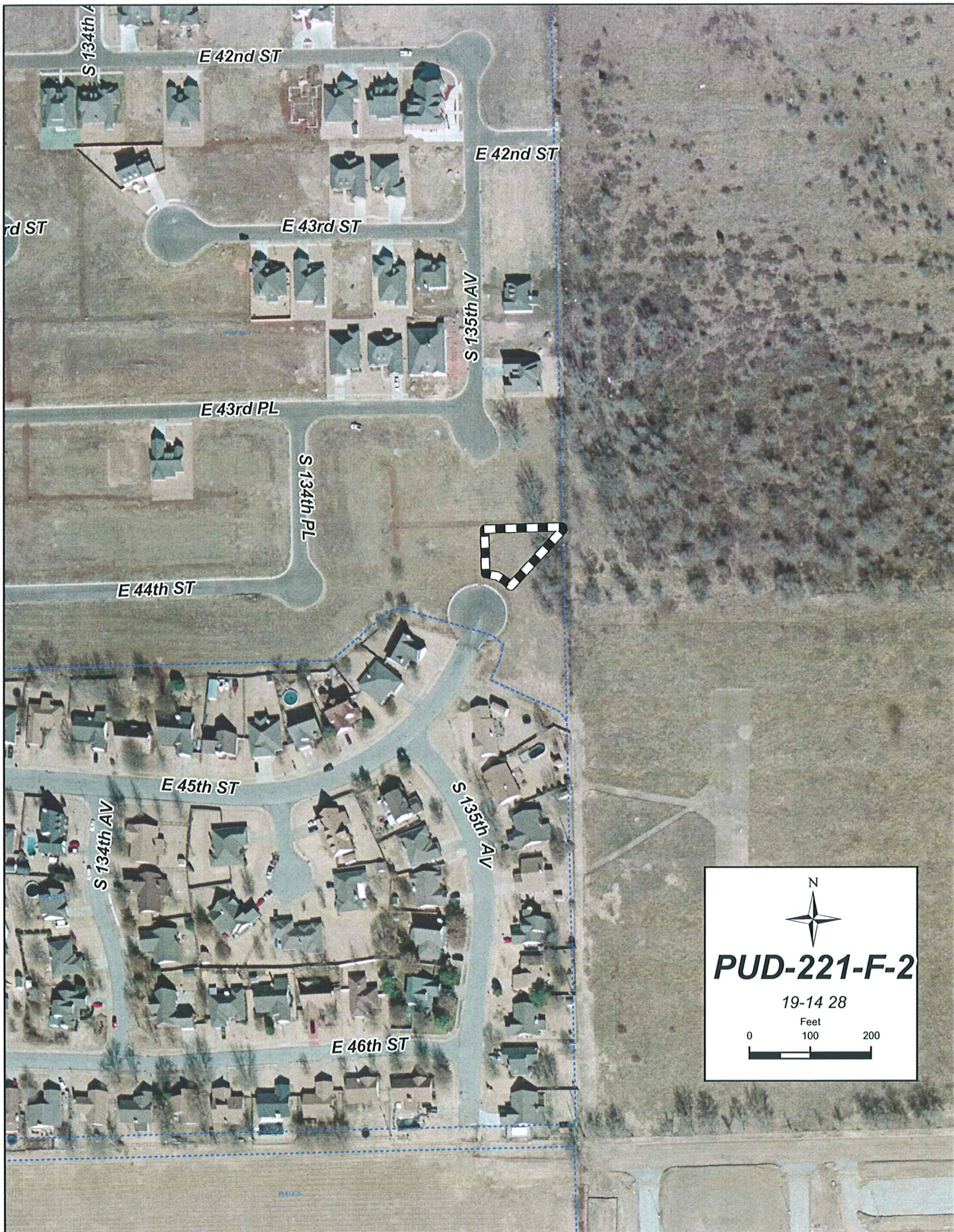
PUD-635




19-14 28

Feet





N




PUD-221-F-2

19-14 28

Feet

0 100 200

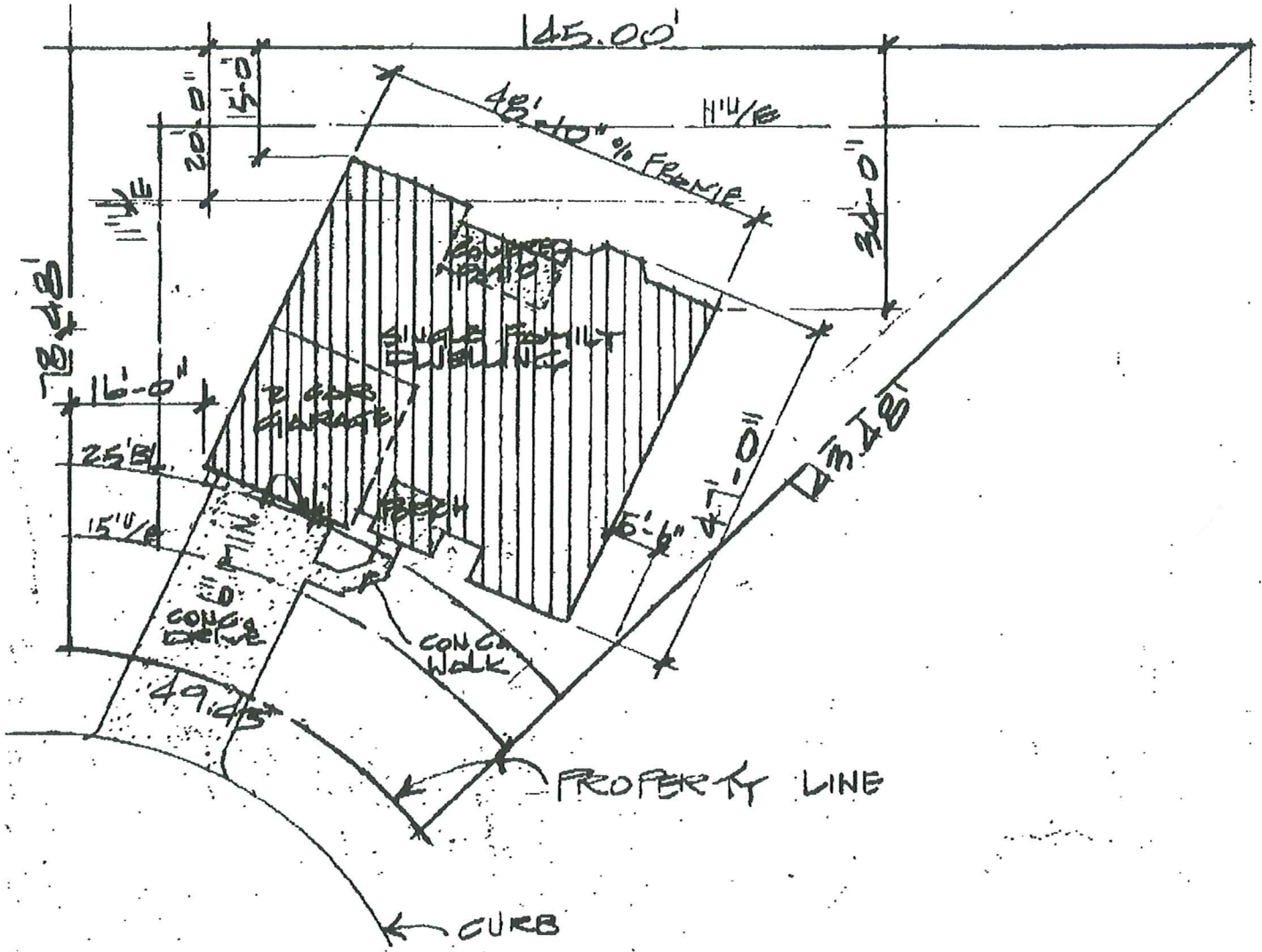


March 28, 2007

STAFF RECOMMENDATION

PUD-221-F-2: Minor Amendment – Residential Structure; 4409 135th East Avenue; Lot 10, Block 5, Crystal Creek; CS/RM-1/RD/RS-3/PUD; PD-17; CD-6

The applicant is requesting a minor amendment to PUD-221-F for the purpose of reducing the rear setback from 20 feet to 15 feet for the construction of a residence. No other amendments have been requested or granted to adjust setbacks in this PUD. (PUD-221-F-1 was approved by TMAPC on July 17, 2002 to consolidate development areas.) Staff is reluctant to set a precedent for this subdivision which is only partially developed and recommends the applicant reorient the house on the lot or use an alternative plan. Therefore, staff recommends **DENIAL** of PUD-221-F-2 as proposed.



Plot Plan scale: 1" = 20'

LEGAL DESCRIPTION

LOT 10, BLOCK 5, COTSYL CREEK, AN ADDITION TO THE CITY OF TULSA, TULSA COUNTY, OKLAHOMA

ADDRESS:

4409 E. 45th ST., SO.
 135th East Avenue

E. 45th St. SO.